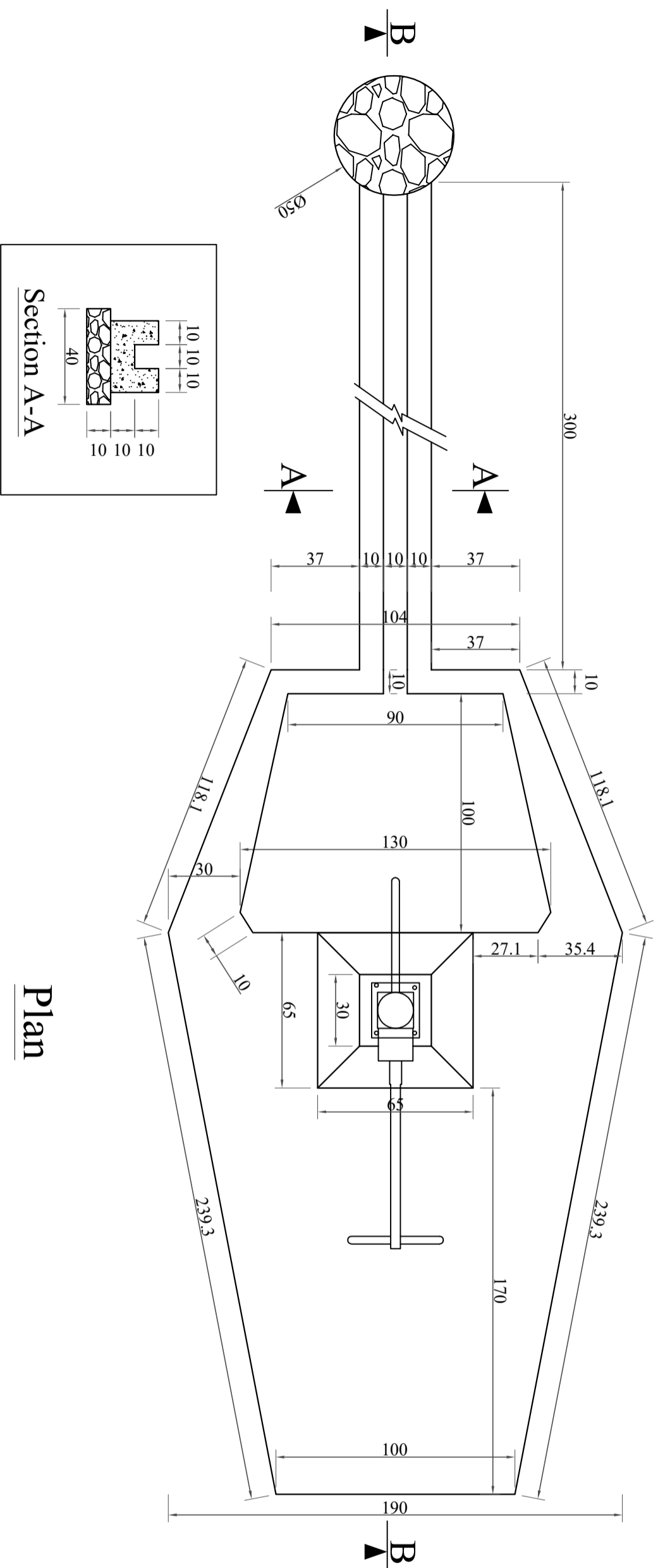


Bore Well with Hand Pump



Section A-A

Plan

- Note:**
- 1- All dimensions are in cm unless otherwise stated.
 - 2- All PCC works should be with 1:2:4 mortar unless otherwise stated.
 - 3- Curing must be continued upto 28 days.
 - 4- Clear and Clean water must be used every where.
 - 5- The depth of bore well is related to static water level and it should have at least 20m water column in it.



UNITED NATIONS INTERNATIONAL
CHILDREN'S EMERGENCY FUND



CITIZENS ORGANIZATION FOR
ADVOCACY & RESILIENCE

Remarks

PROJECT

Kabul IDP WASH PROJECTS

DRAWING TITLE
Hand Pump Plan

DWG NUMBER
(WS-1)

Draft, Designed & Drawn By
Eng. Besmilla'h 'Aryoub'y'

APPROVED BY INDEX

SCALE(NTS) DATE: Nov -21