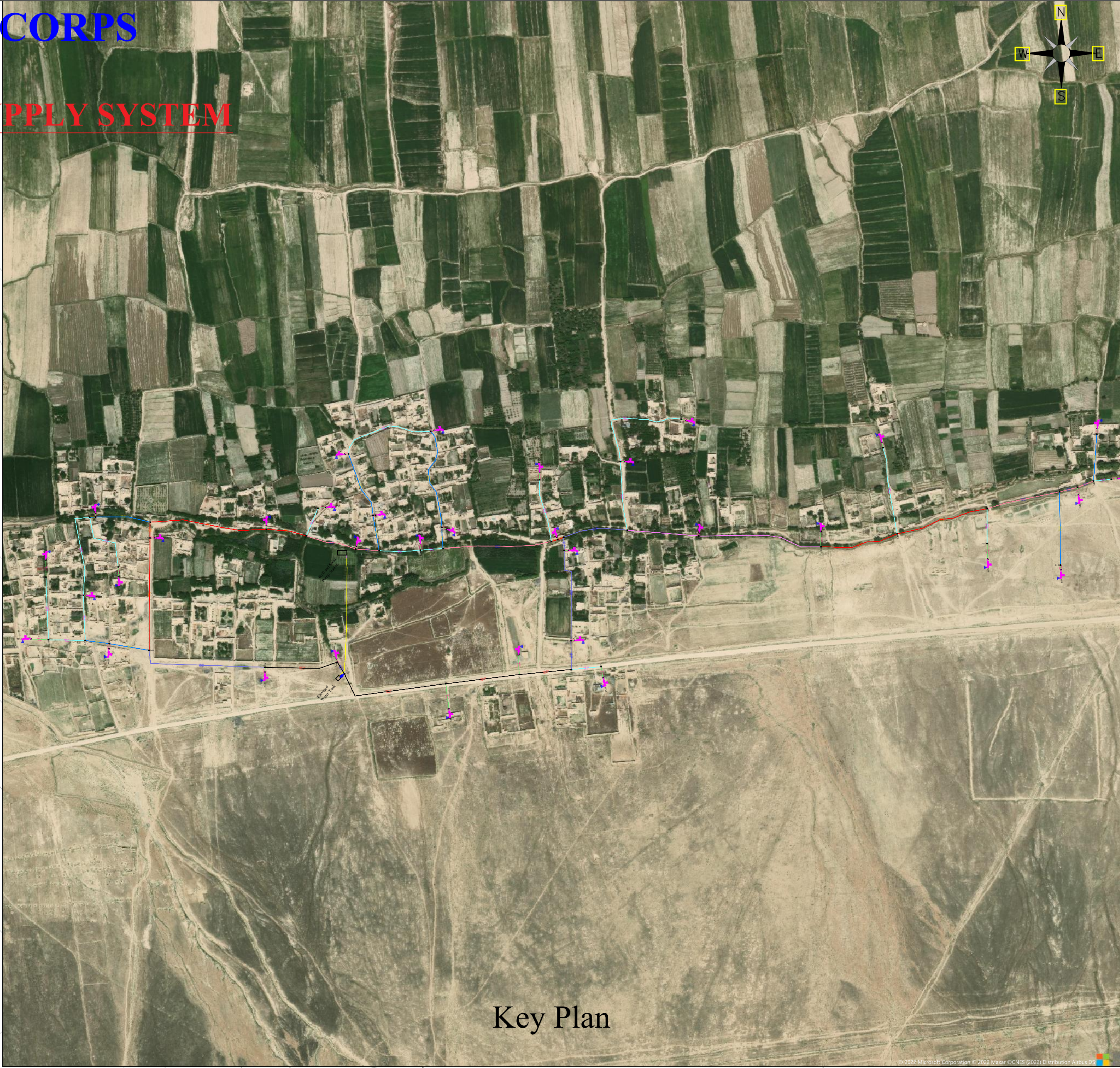
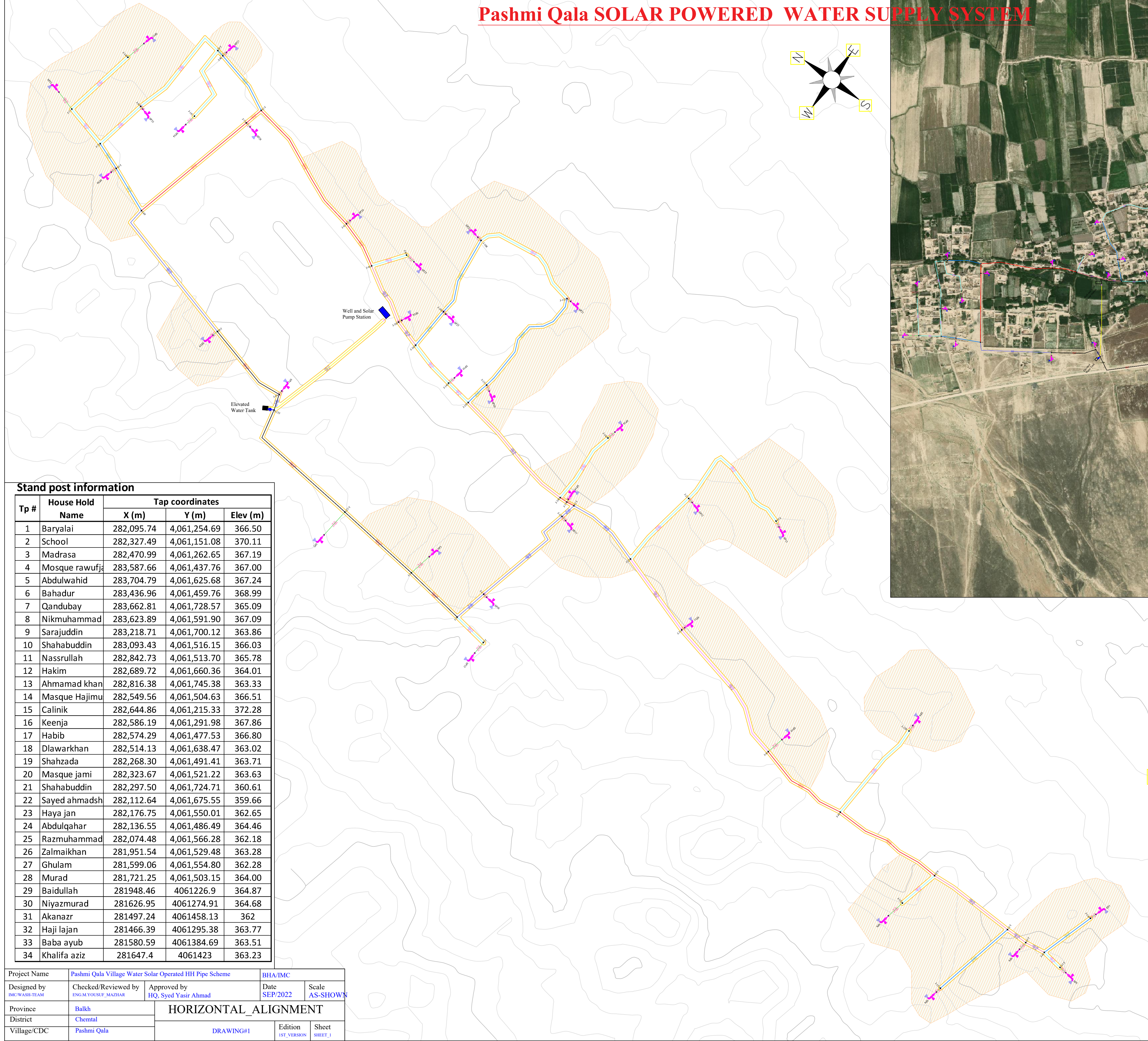
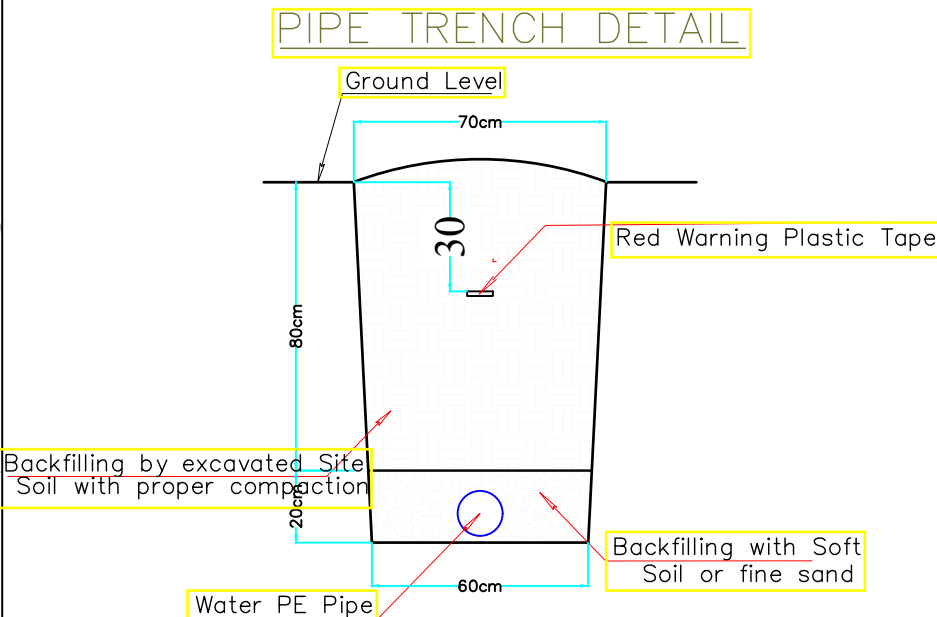


INTERNATIONAL MEDICAL CORPS
WASH PROGRAM
Pashmi Qala SOLAR POWERED WATER SUPPLY SYSTEM



Key Plan

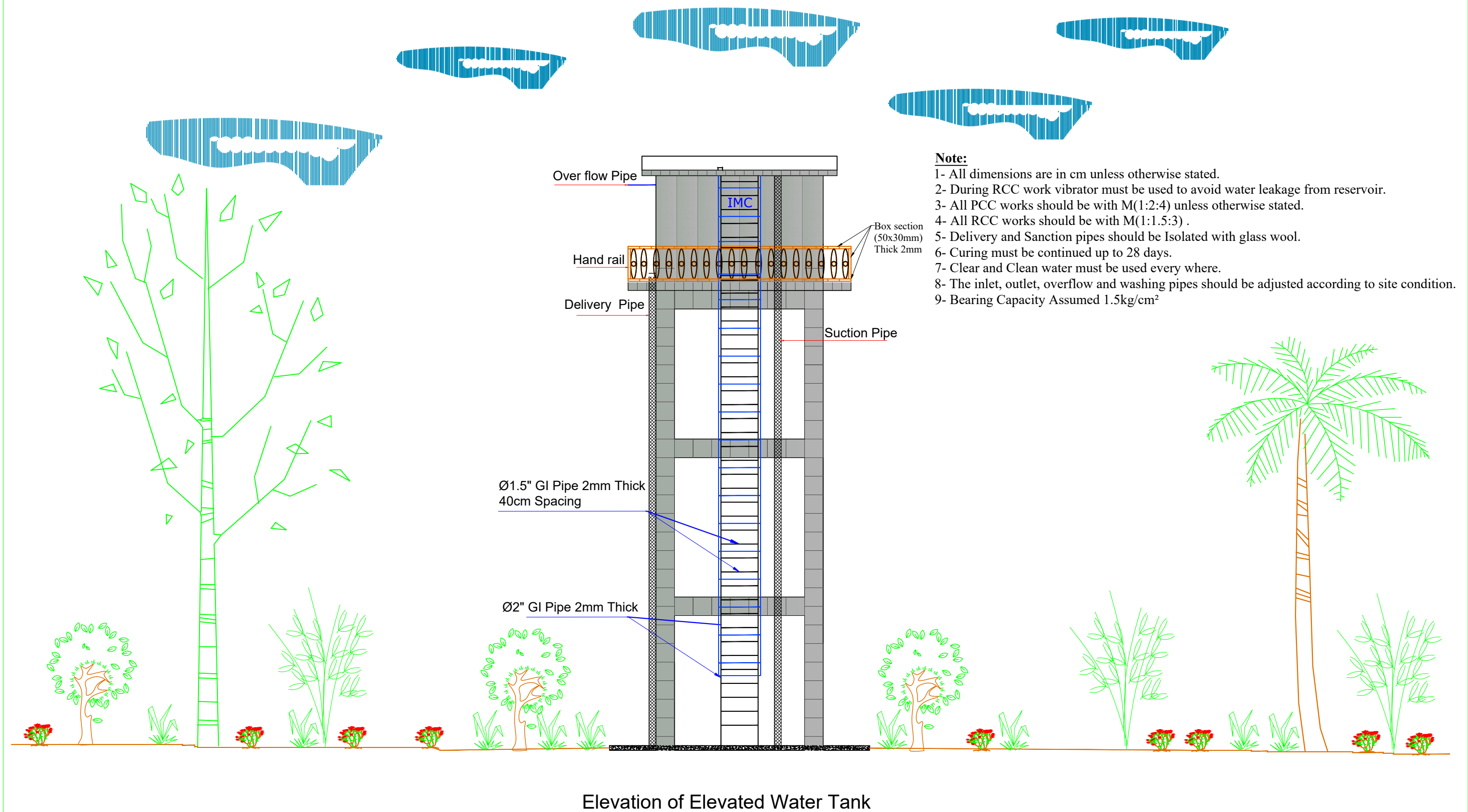



Infrastructures Location				
S/N	Feature Name	Easting (M)	Northing (M)	Elevation (m)
1	Water Well	282,117.12	4,061,468.07	362
2	Water Tank	282,106.91	4,061,218.75	379

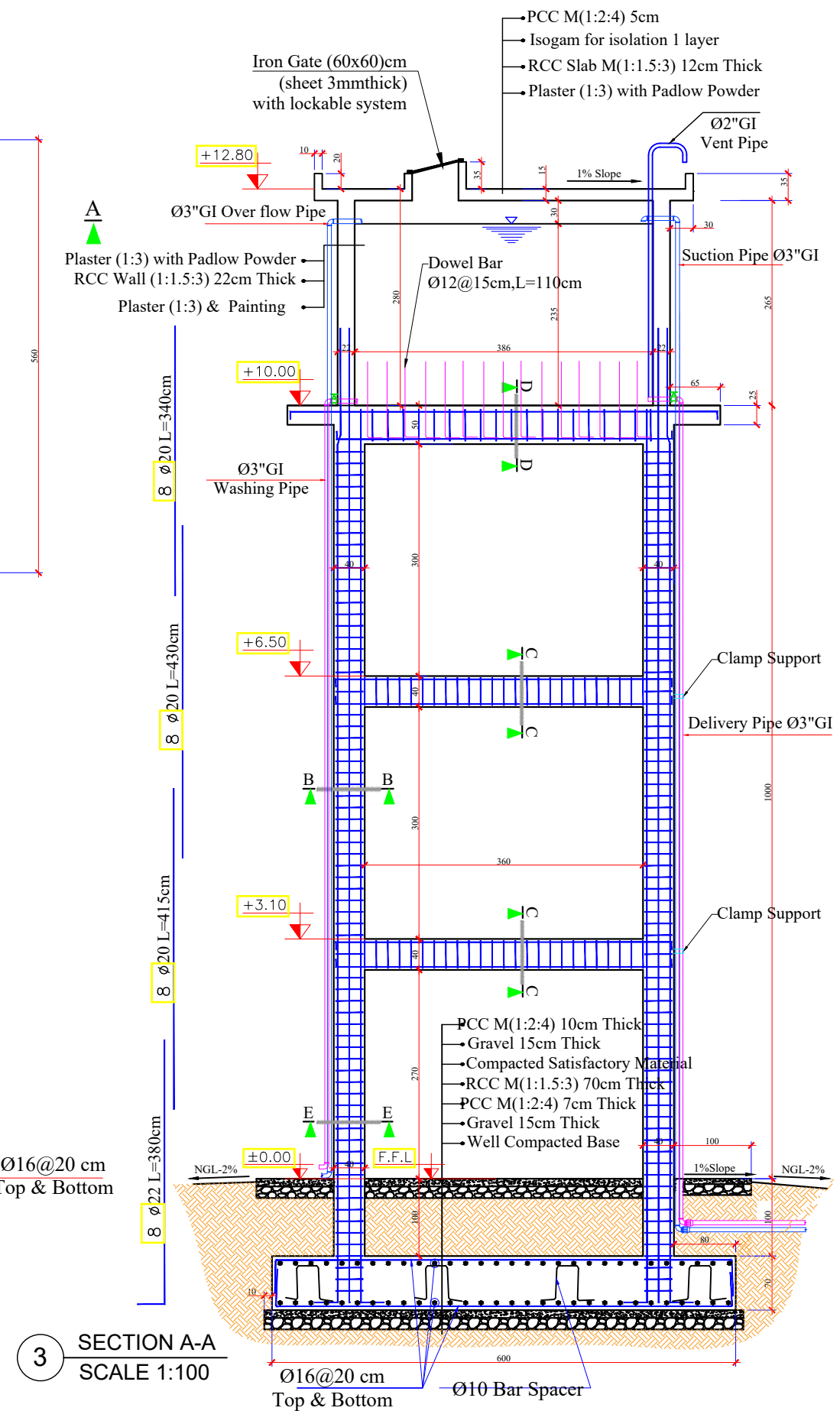
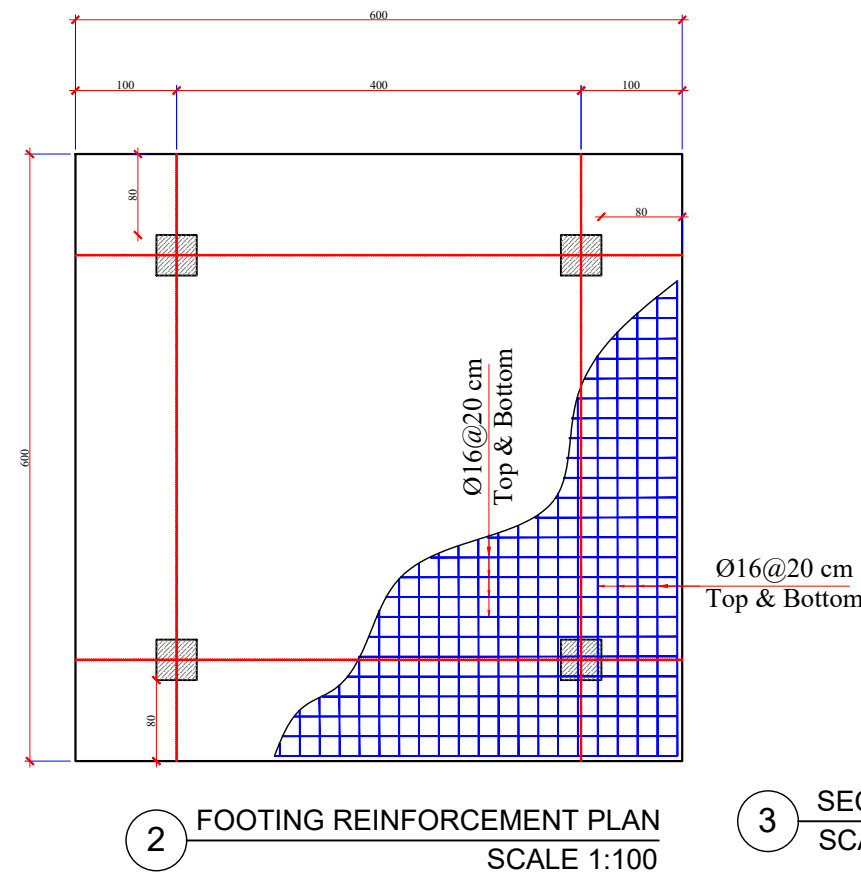
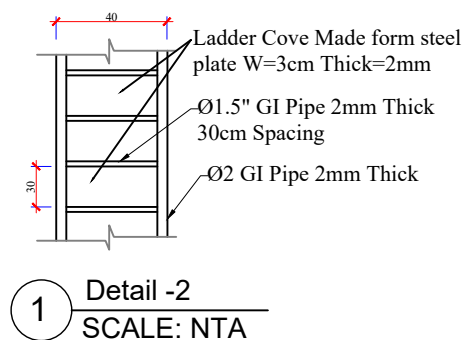
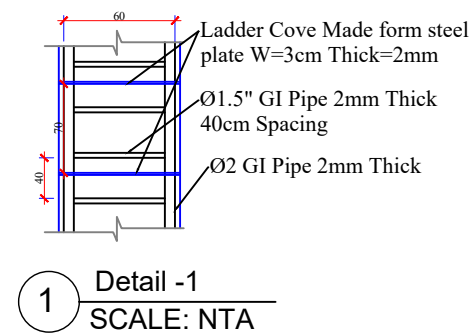
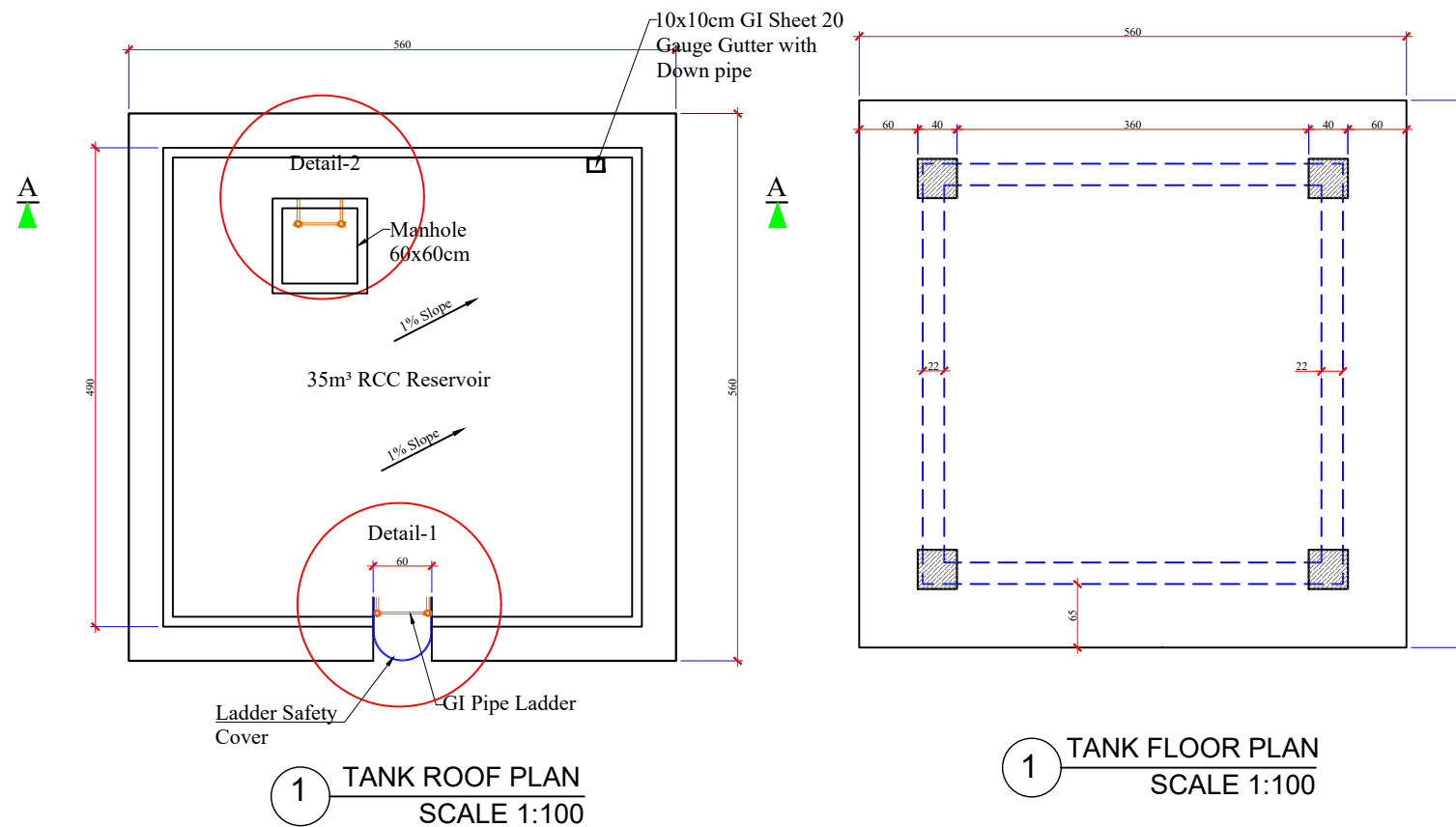
- Note:**
- The unit used for length is meter and for diameter is (").
 - HDPE-100 Pipe, 16 Bar used for Ø20, Ø25 and Well-Tank pipes, and the HDPE-PE100, 10 Bars is using for larger sizes of the pipes, fromØ32 and above (As per PE pipe standard Catalogue).
 - All diameter of PE pipe in drawing considered Outer diameter.
 - The design/drawing has been prepared based on GPS surveyed data, therefor the flow must be checked in some critical pressure zones and in case of issues should inform the design team for further technical guidance and follow ups.
 - The WASH Site engineer and contractor should adjust the Taps flow to design flow.
 - Arbitrary tap's connections are not allowed, so please avoid extra tap's connection, but in case of need please contact with the design team and then you can take further steps accordingly.

LEGEND

- Water Well+PV system
- Topographic (Contours Lines)
- Residential Area
- PE Pipe 100, PN10 Ø(OD) 160
- PE Pipe 100, PN10 Ø(OD) 140
- PE Pipe 100, PN10 Ø(OD) 125
- PE Pipe 100, PN10 Ø(OD) OD-110
- PE Pipe 100, PN10 Ø(OD) OD-90
- PE Pipe 100, PN10 Ø(OD) OD-75
- PE Pipe 100, PN10 Ø(OD) OD-63
- PE Pipe 100, PN10 Ø(OD) OD-50
- PE Pipe 100, PN10 Ø(OD) OD-40
- PE Pipe 100, PN16 Ø(OD) OD-32
- PE Pipe 100, PN16 Ø(OD) OD-25
- PE Pipe 100, PN16 Ø(OD) OD-20
- PE-PIPE FROM WELL-TANK
- STAND POST
- POINT (NODES)
- WATER TANK
- GATE VALVE BOX



Funded by:	USAID / BHA	Drafted and Design BY:	IMC/WASH Team	Province	Balkh	Date	Sep/2022	Drawing Title	Elevated 35 M3 Tank	
INTERNATIONAL MEDICAL CORPS (IMC) PROGRAM DEPARTMENT WASH UNIT		Review and Checked by:	Eng. Yousuf Mazhar	District	Chemtal	Scale	A3-shown	Sheet Title	Front View	
		Review and Approved by:	Eng. Mohammad Yasir	Village	Pashmi Qala	Unit	Centimeters	Sheet #	01	



Funded by: **USAID / BHA**

INTERNATIONAL MEDICAL CORPS (IMC)
PROGRAM DEPARTMENT
WASH UNIT

Drafted and Design BY: **IMC/WASH Team**

Review and Checked by: **Eng. Yousuf Mazhar**

Review and Approved by: **Eng. Mohammad Yasir**

Province: **Balkh**

District: **Chemtal**

Village: **Pashmi Qala**

Date: **Sep/2022**

Scale: **A3-Shown**

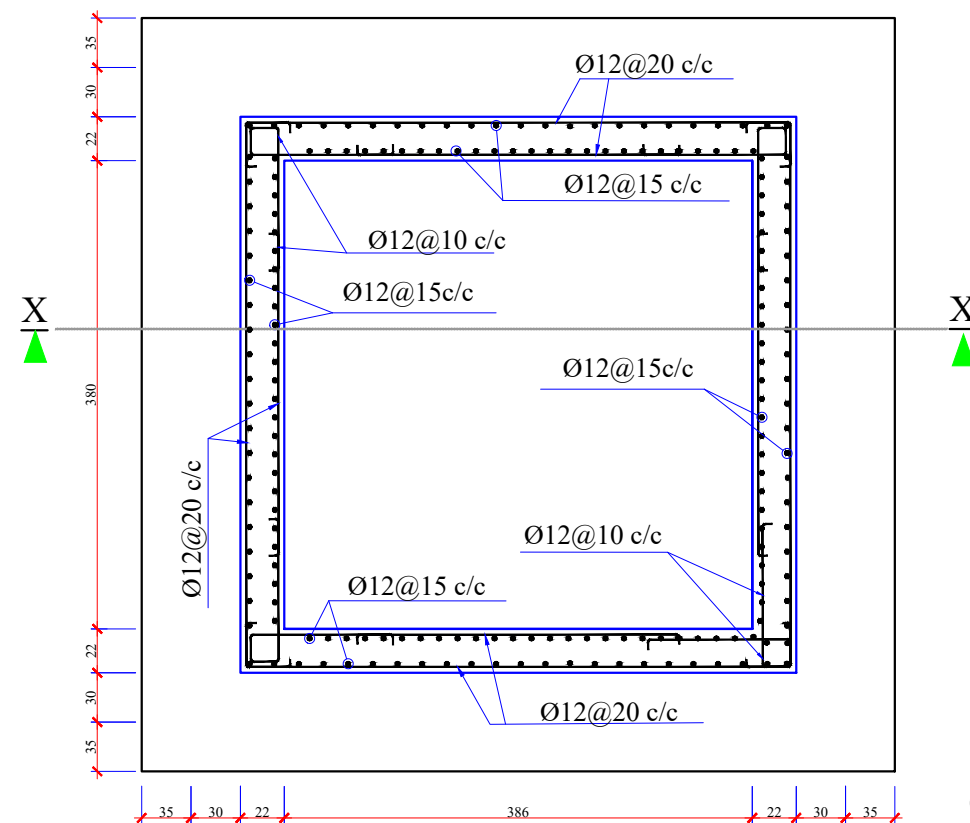
Unit: **Centimeters**

Drawing Title: **Elevated 35 M3 Tank**

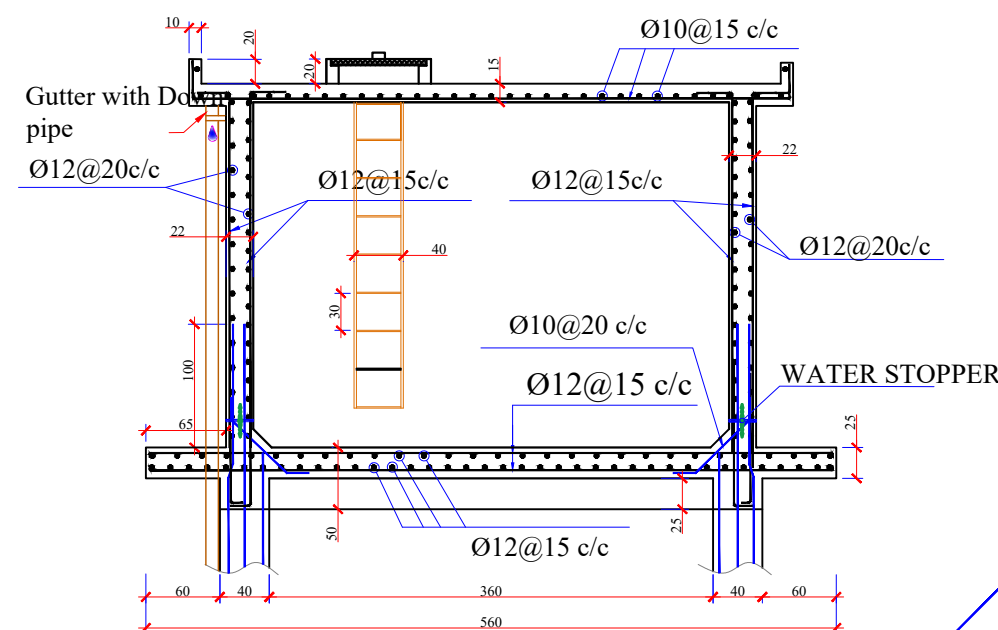
Sheet Title: **Sections**

Sheet #: **-----**

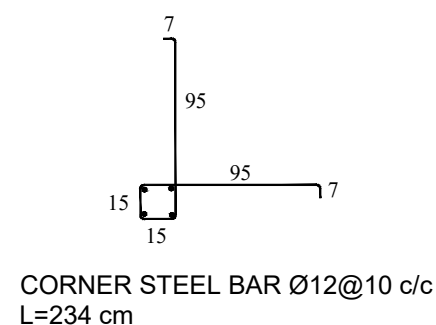




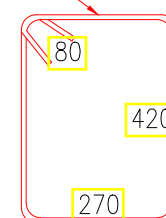
1 PLAN REINFORCEMENT
SCALE 1:100



3 SECTION X-X
SCALE 1:100

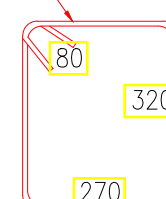


Ø8@15c/c



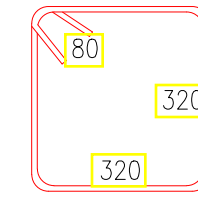
4 SECTION D-D
SCALE 1:100

Ø8@15c/c



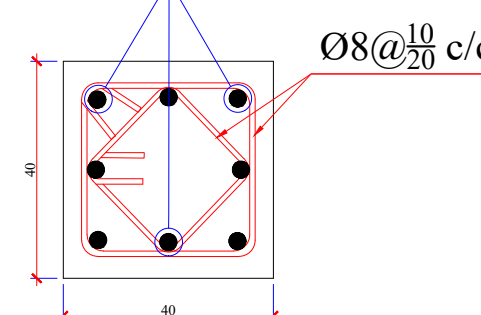
5 SECTION C-C
SCALE 1:100

Ø8@¹⁰/₂₀ c/c



6 SECTION B-B
SCALE 1:100

8Ø22



6 SECTION E-E
SCALE 1:100

NOTE:
THE COLUMN'S STIRRUPS SPACING AT JOINT AND LONGITUDINAL BAR OVERLAPPING LOCATION TO BE CONSIDERED AT 10cm SPACE AND THE REST AT 20cm.

Note:

- 1- All dimensions are in cm unless otherwise stated.
- 2- During RCC work vibrator must be used to avoid water leakage from reservoir.
- 3- All PCC works should be with M(1:2:4) unless otherwise stated.
- 4- All RCC works should be with M(1:1.5:3).
- 5- Delivery and Sanction pipes should be Isolated with glass wool.
- 6- Curing must be continued up to 28 days.
- 7- Clear and Clean water must be used every where.
- 8- The inlet, outlet, overflow and washing pipes should be adjusted according to site condition.
- 9- Bearing Capacity Assumed 1.5kg/cm²

Funded by: USAID / BHA
INTERNATIONAL MEDICAL CORPS (IMC)
PROGRAM DEPARTMENT
WASH UNIT

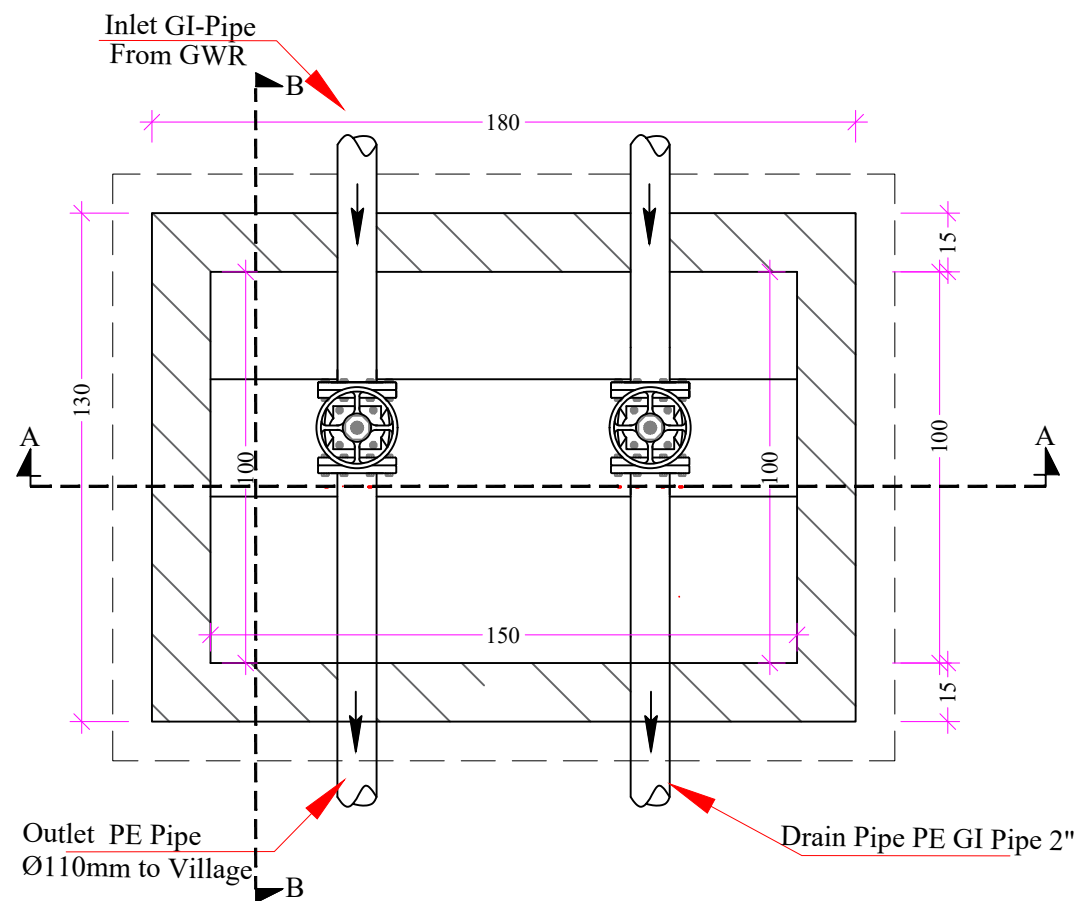
Drafted and Design BY: IMC/WASH Team
Review and Checked by: Eng. Yousuf Mazhar
Review and Approved by: Eng. Mohammad Yasir

Province: Balkh
District: Chemtal
Village: Pashmi Qala

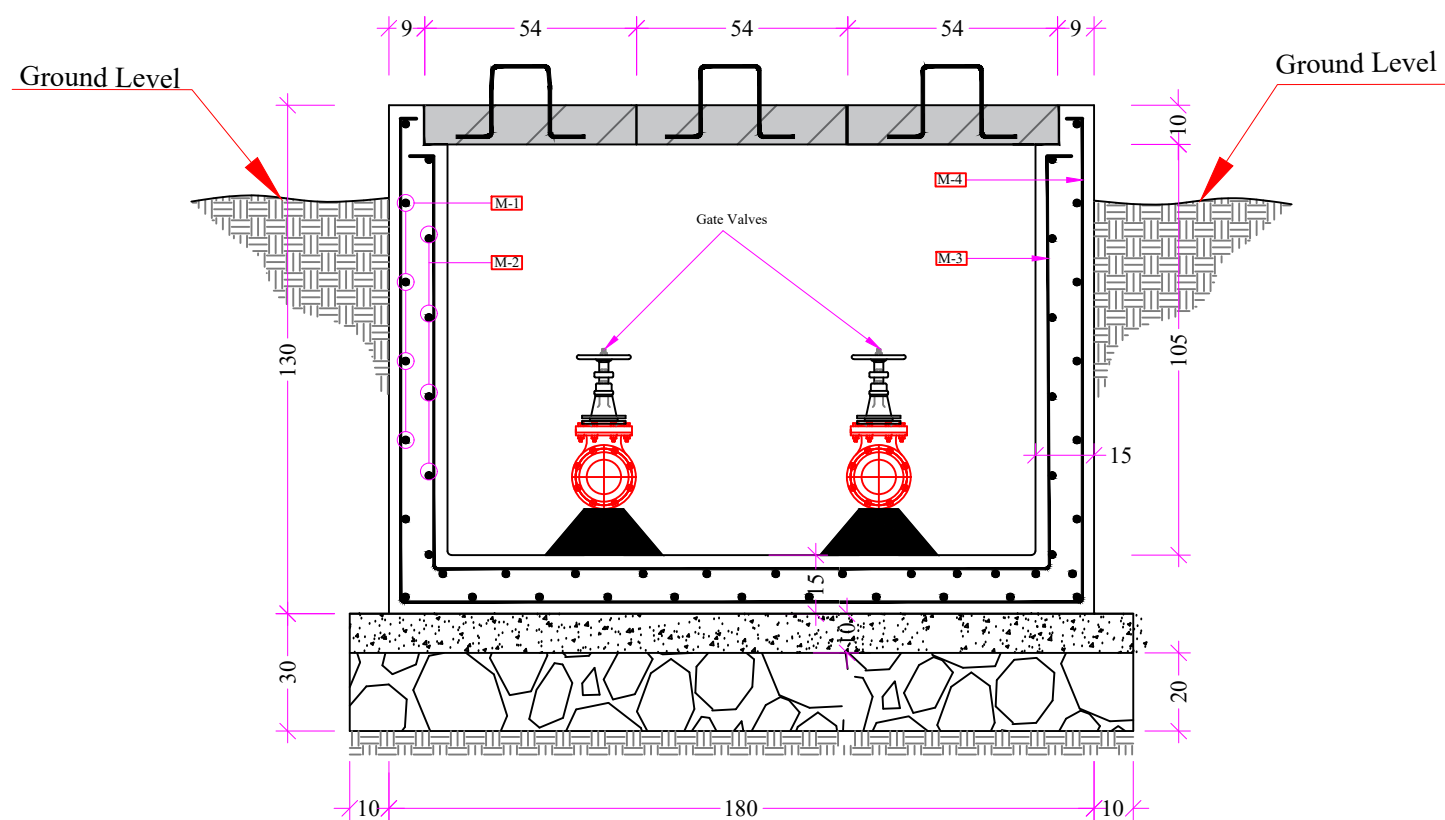
Date: Sep/2022
Scale: A3-Shown
Unit: Centimeters

Drawing Title: Elevated Tank 35 M3
Sheet Title: Renfor. Plan
Sheet #: -----

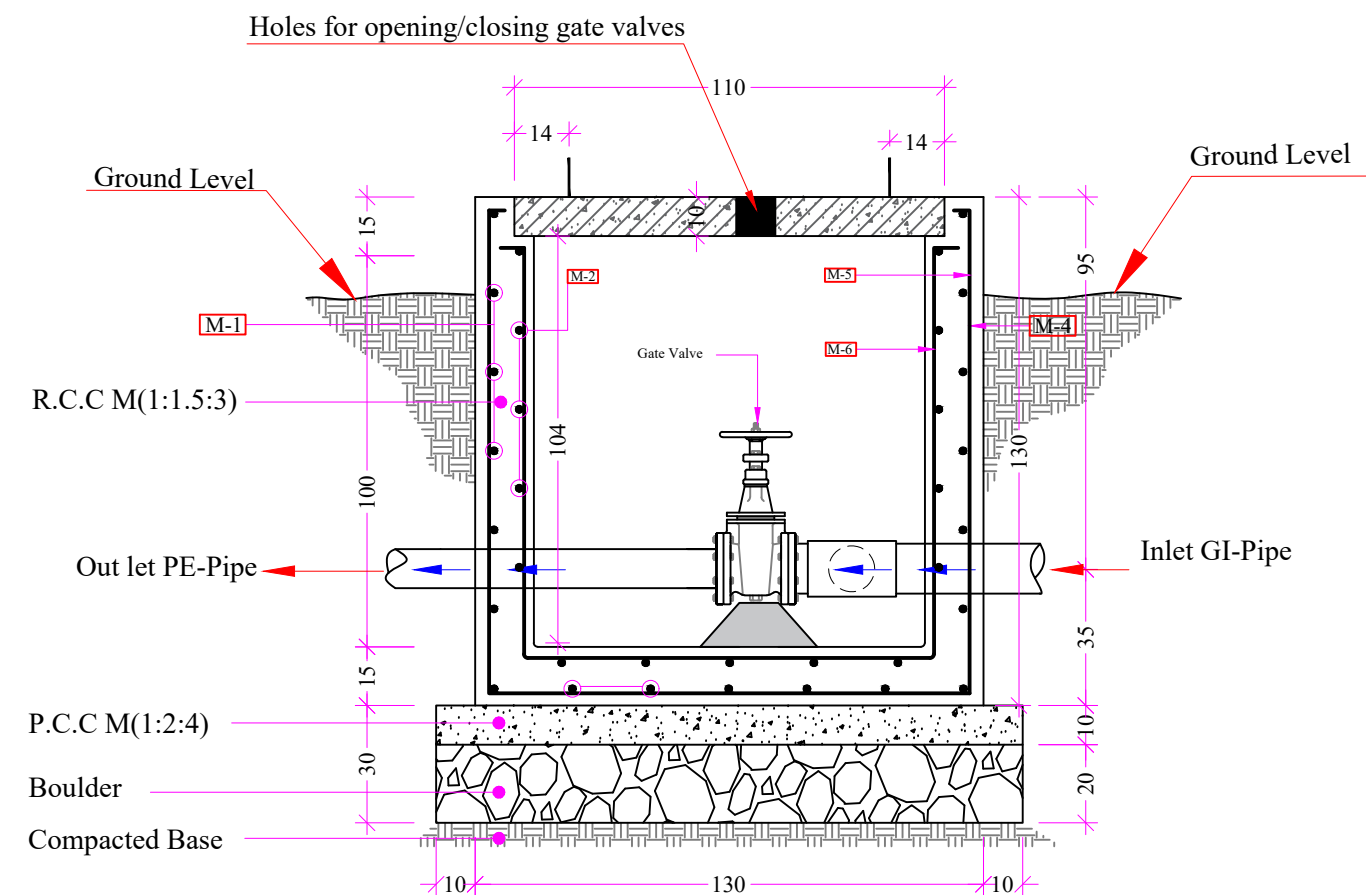




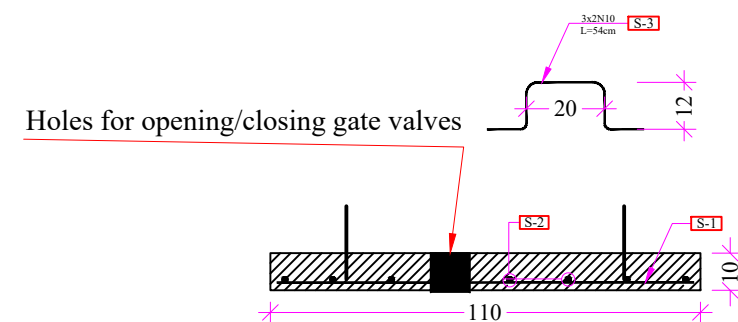
PLAN



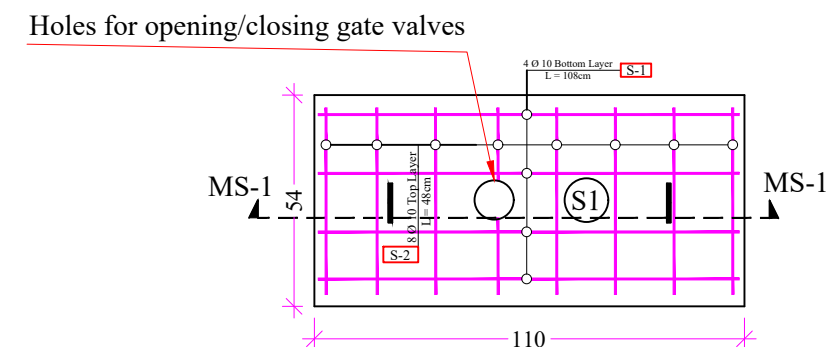
SECTION A-A



SECTION B-B



SECTION MS1-MS1



RCC SLAB PLAN

Funded by: USAID/BHA
INTERNATIONAL MEDICAL CORPS (IMC)
PROGRAM DEPARTMENT
WASH UNIT

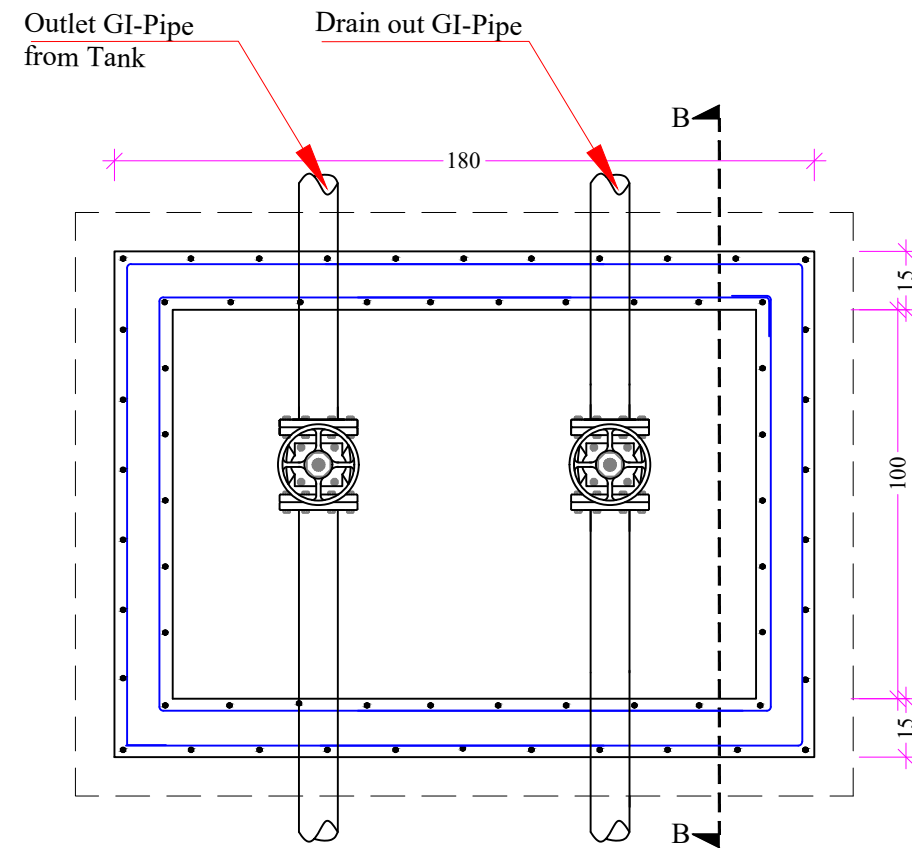
Drafted and Design BY: IMC/WASH Team
Review and Checked by: Eng. Yousuf Mazhar
Review and Approved by: Eng. Mohammad Yasir

Province: Balkh
District: Chemtal
Village: Pashmi Qala

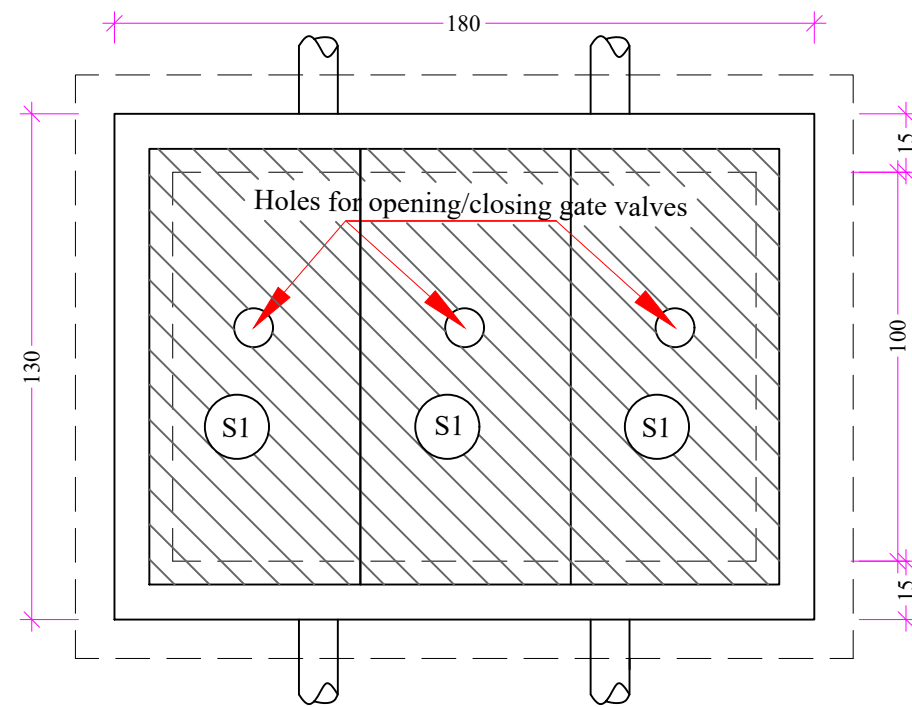
Date: Sep/2022
Scale: A3-Shown
Unit: Centimeters

Drawing Title: Gate Valve
Sheet Title: Renfor. Plan
Sheet #: -----

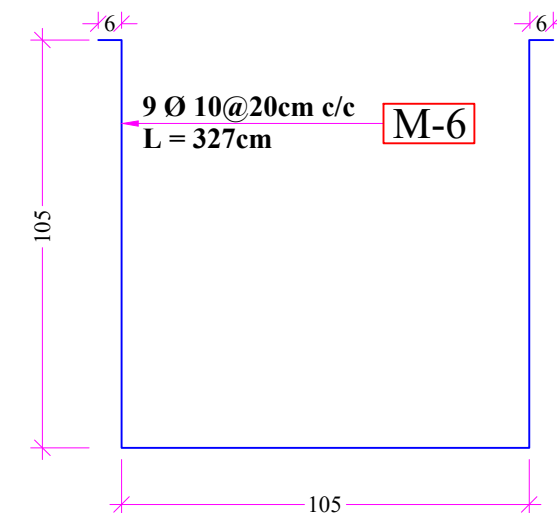
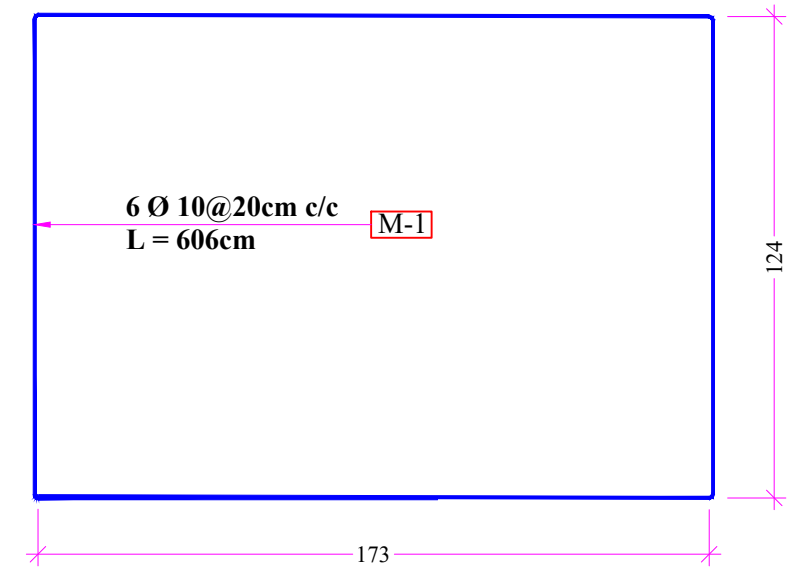
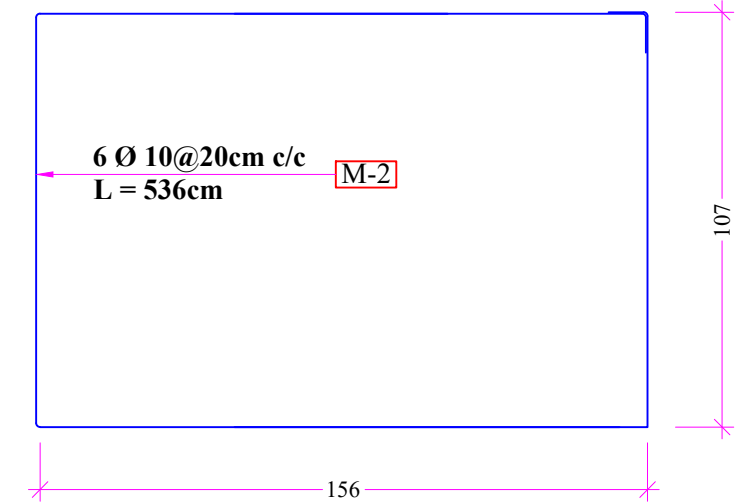
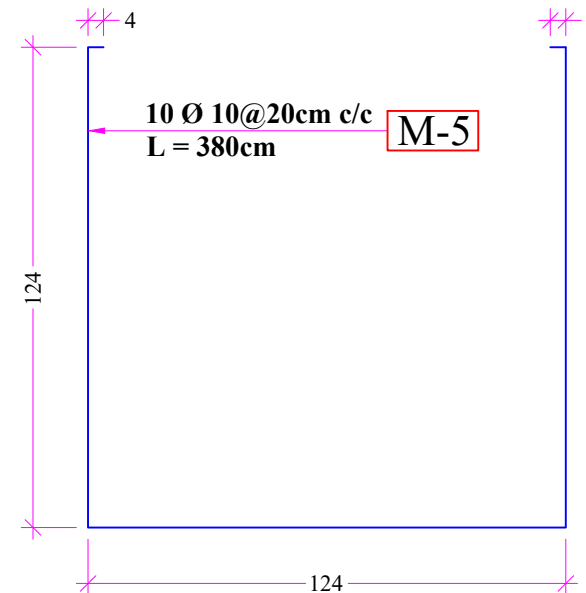
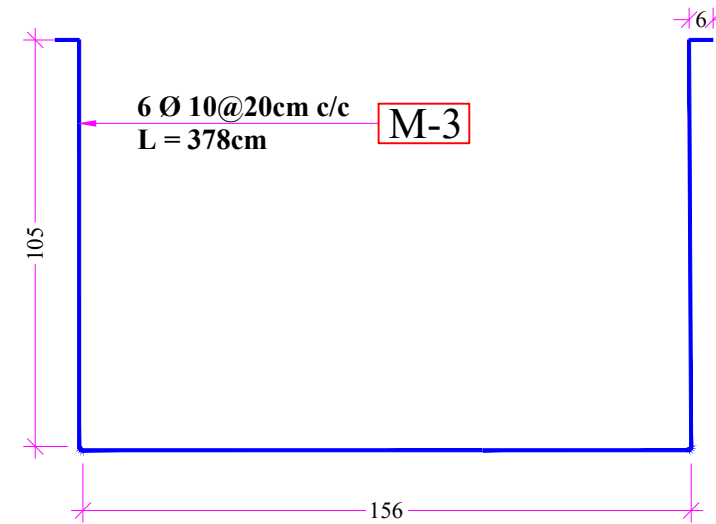
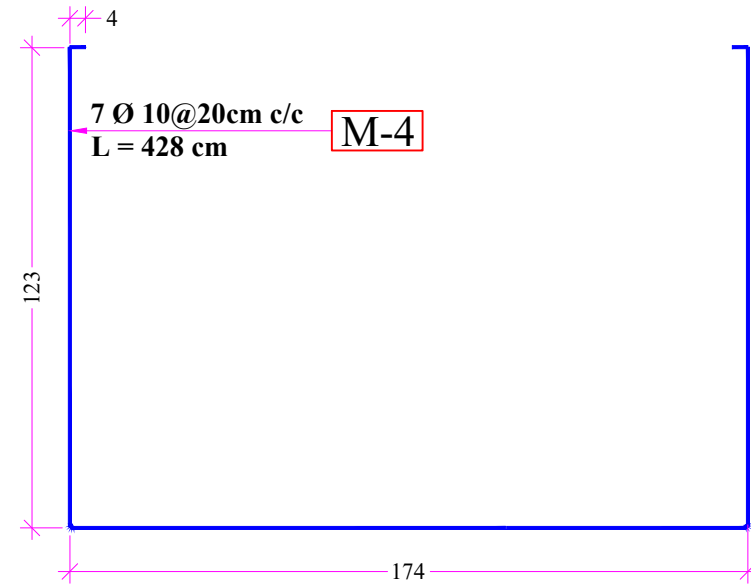




SECTIONAL PLAN OF RCC WALLS



TOP VIEW



Funded by: **USAID/BHA**
INTERNATIONAL MEDICAL CORPS (IMC)
PROGRAM DEPARTMENT
WASH UNIT

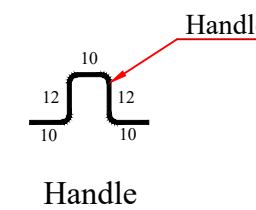
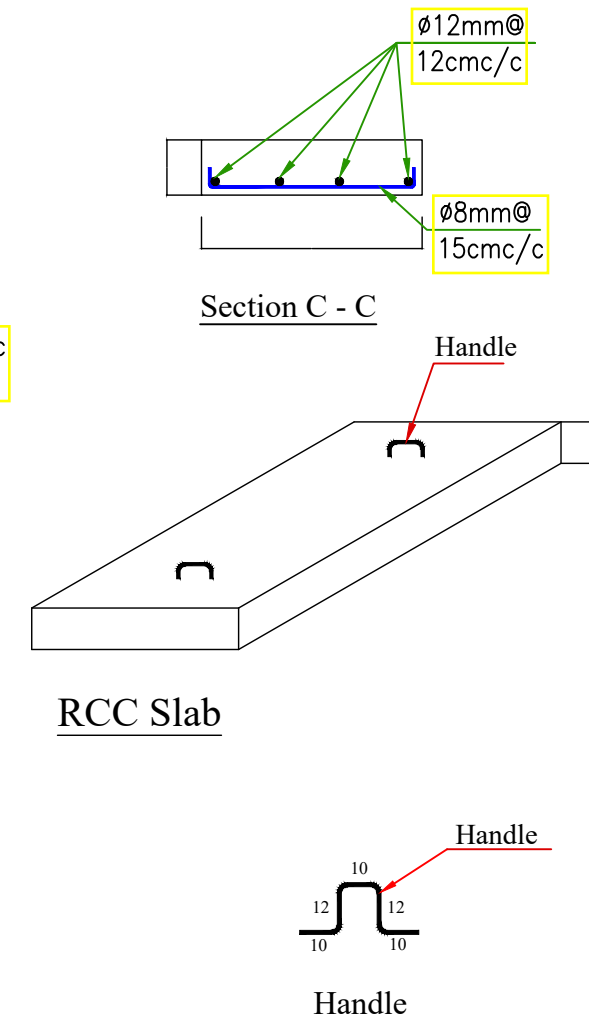
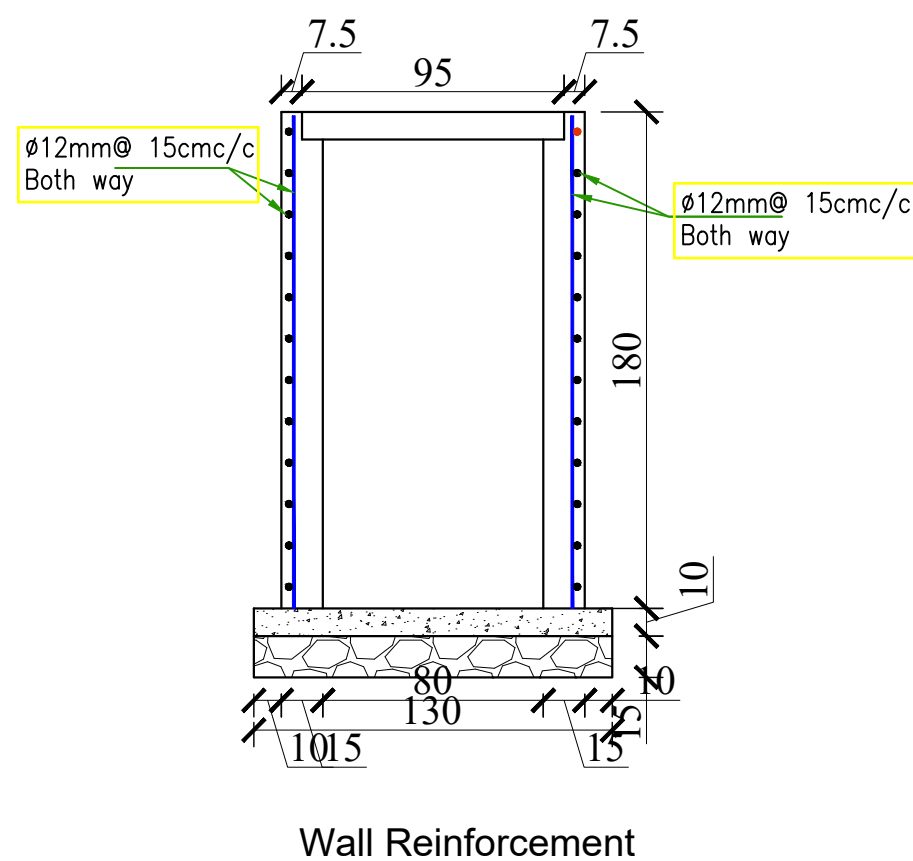
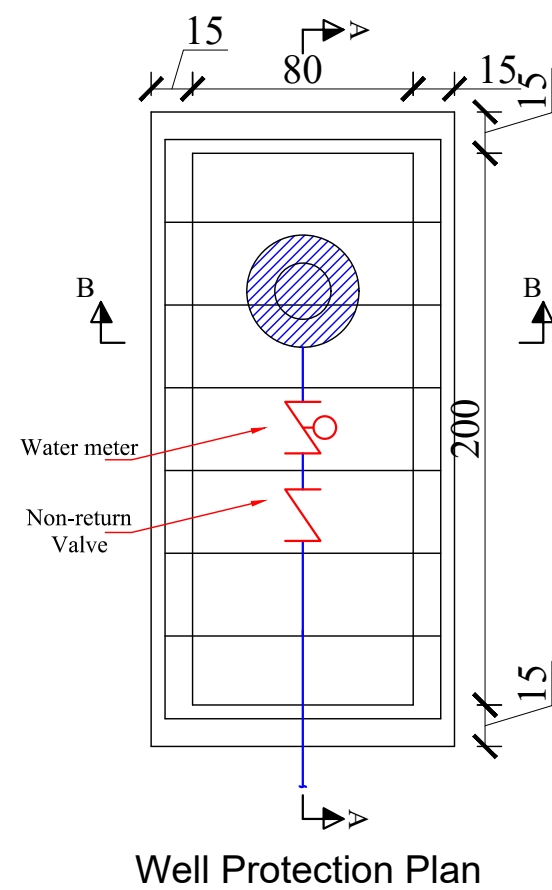
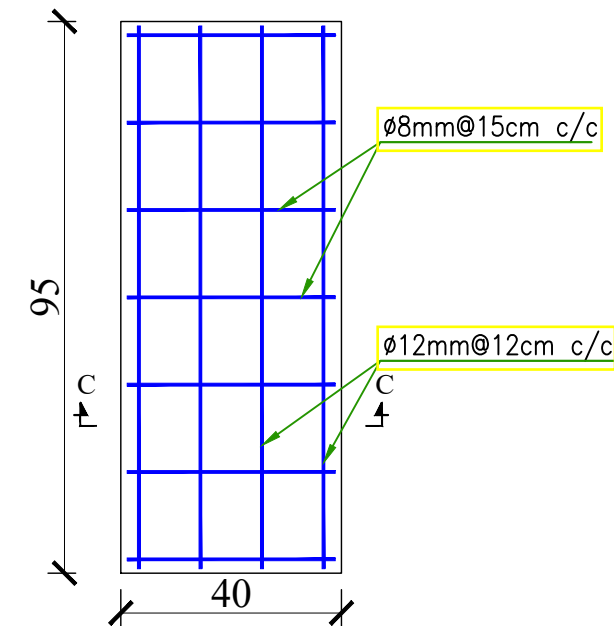
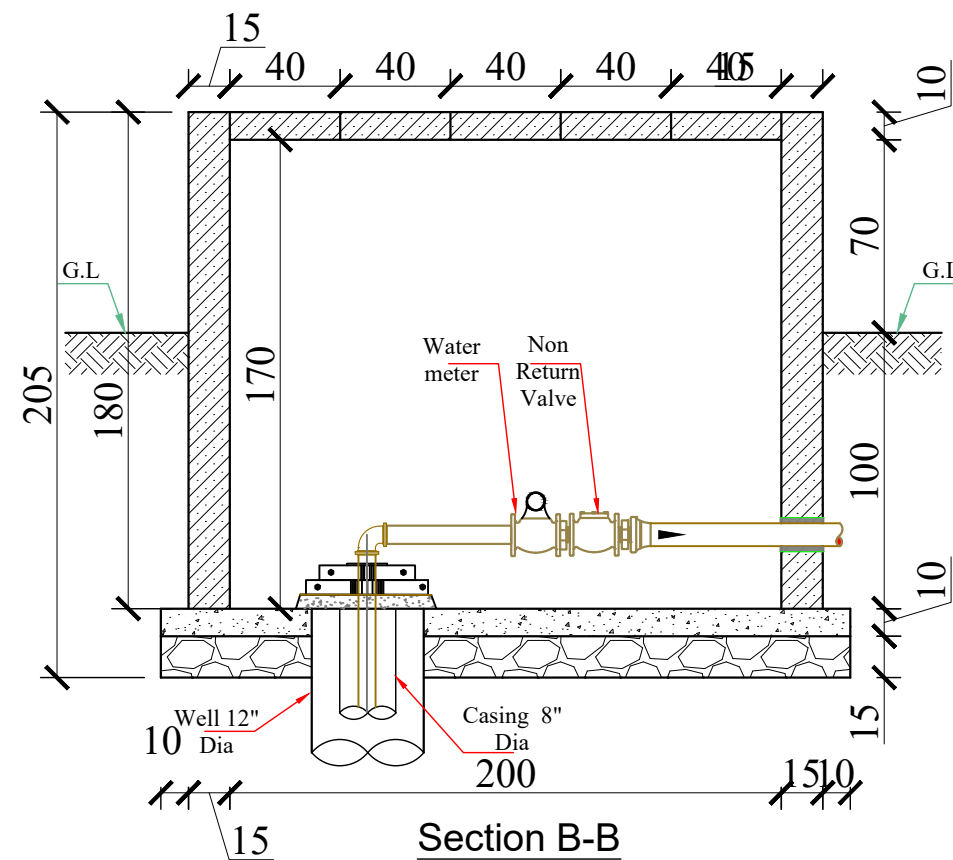
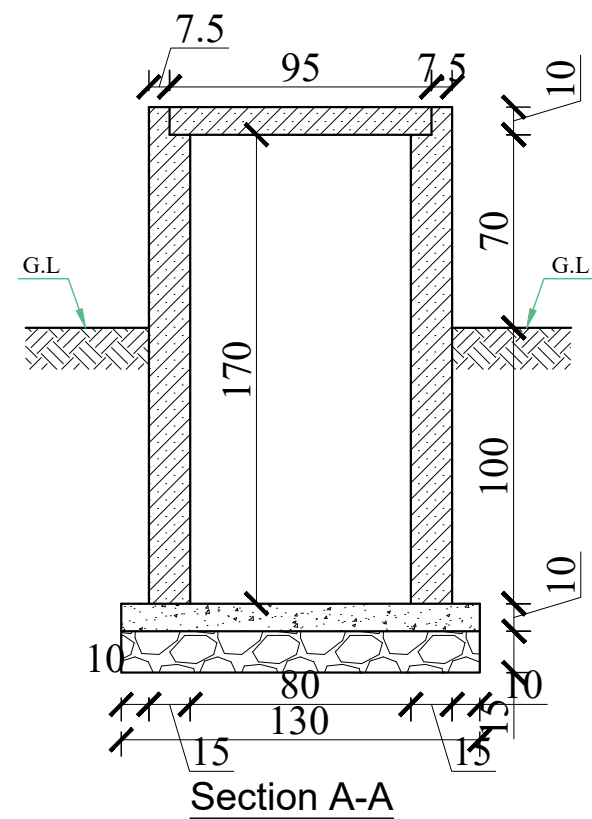
Drafted and Design BY: **IMC/WASH Team**
Review and Checked by: **Eng. Yousuf Mazhar**
Review and Approved by: **Eng. Mohammad Yasir**

Province: **Balkh**
District: **Chemtal**
Village: **Pashmi Qala**

Date: **Sep/2022**
Scale: **A3-Shown**
Unit: **Centimeters**

Drawing Title: **Gate Valve**
Sheet Title: **Renfor. Plan**
Sheet #: **-----**





Funded by: USAID/BHA

INTERNATIONAL MEDICAL CORPS (IMC)
PROGRAM DEPARTMENT
WASH UNIT

Drafted and Design BY: IMC/WASH Team

Review and Checked by: Eng. Yousuf Mazhar

Review and Approved by: Eng. Mohammad Yasir

Province: Balkh

District: Chemtal

Village: Pashmi Qala

Date: Sep/2022

Scale: A3-Shown

Unit: Centimeters

Drawing Title: Well Development

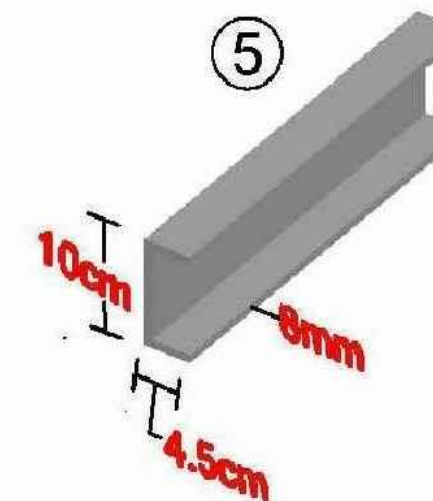
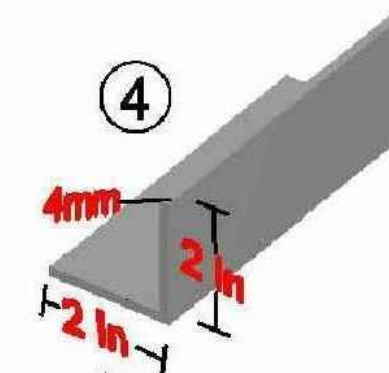
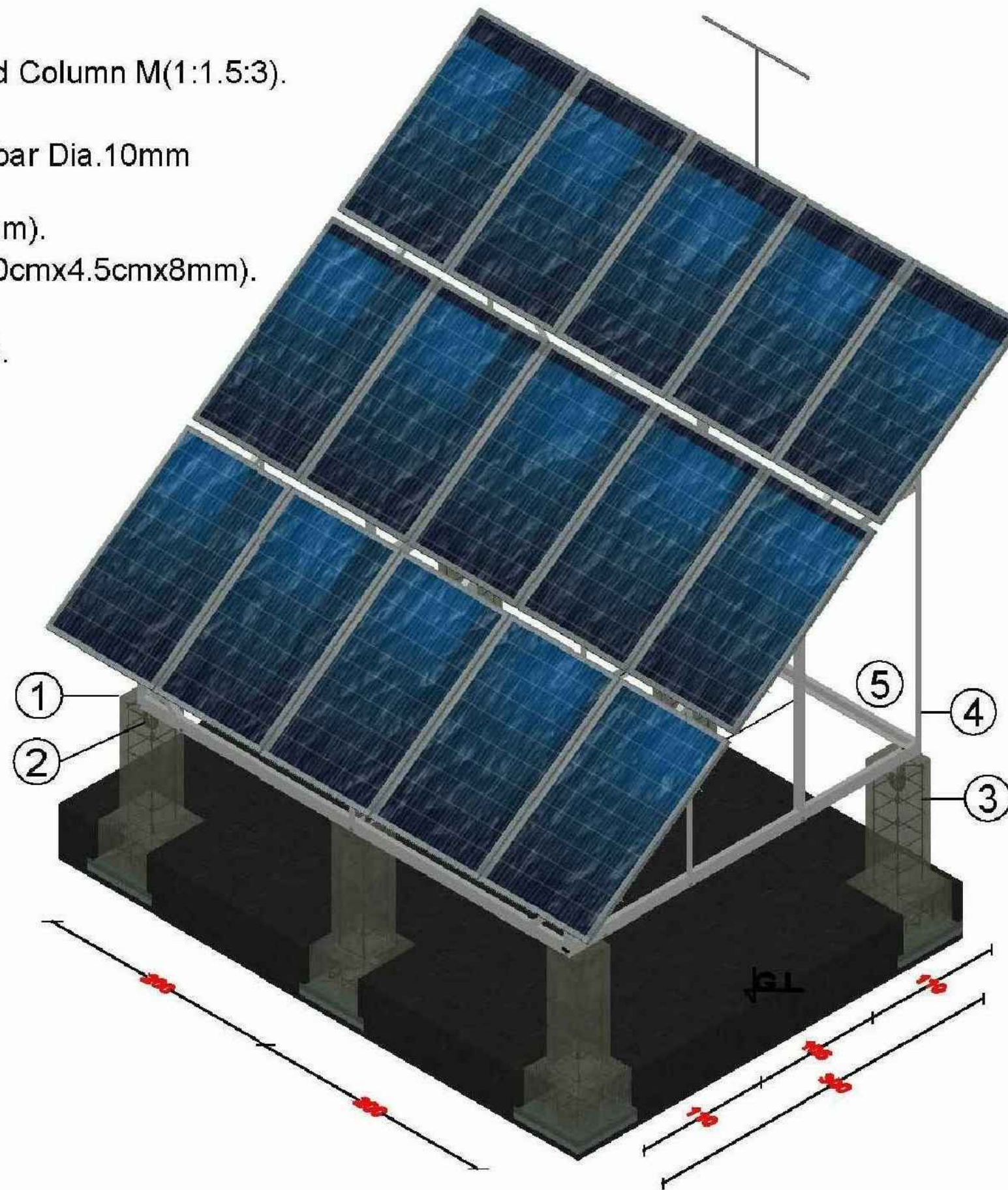
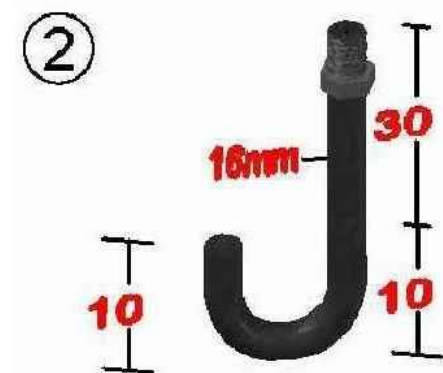
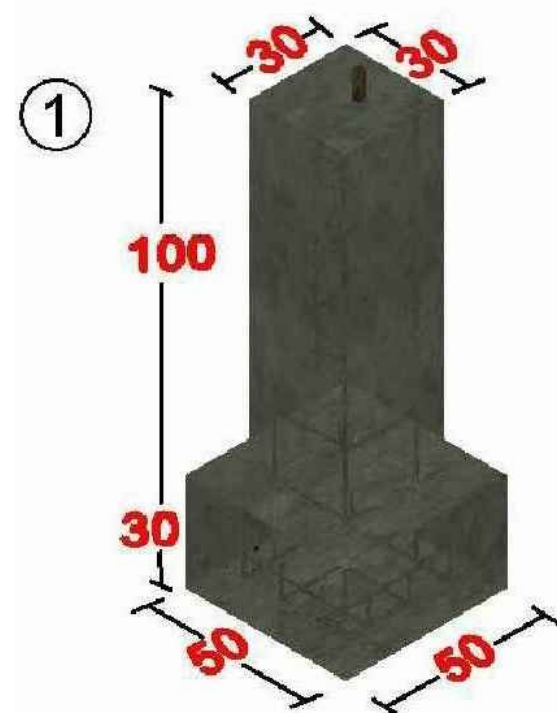
Sheet Title: Sections and details

Sheet #: -----



Note:

- 1-RCC Concrete Footing and Column M(1:1.5:3).
 - 2-J-Anchor Bolt 16mm.
 - 3-Deformed Grade 60 steel bar Dia.10mm according to drawing.
 - 4-Steel angle iron (2"x2"x4mm).
 - 5-Steel girder mini. sizing (10cmx4.5cmx8mm).
- PCC M(1:2:4).
Foundation Compacted 95%.
Potable water used.



Funded by: USAID/BHA
INTERNATIONAL MEDICAL CORPS (IMC)
PROGRAM DEPARTMENT
WASH UNIT

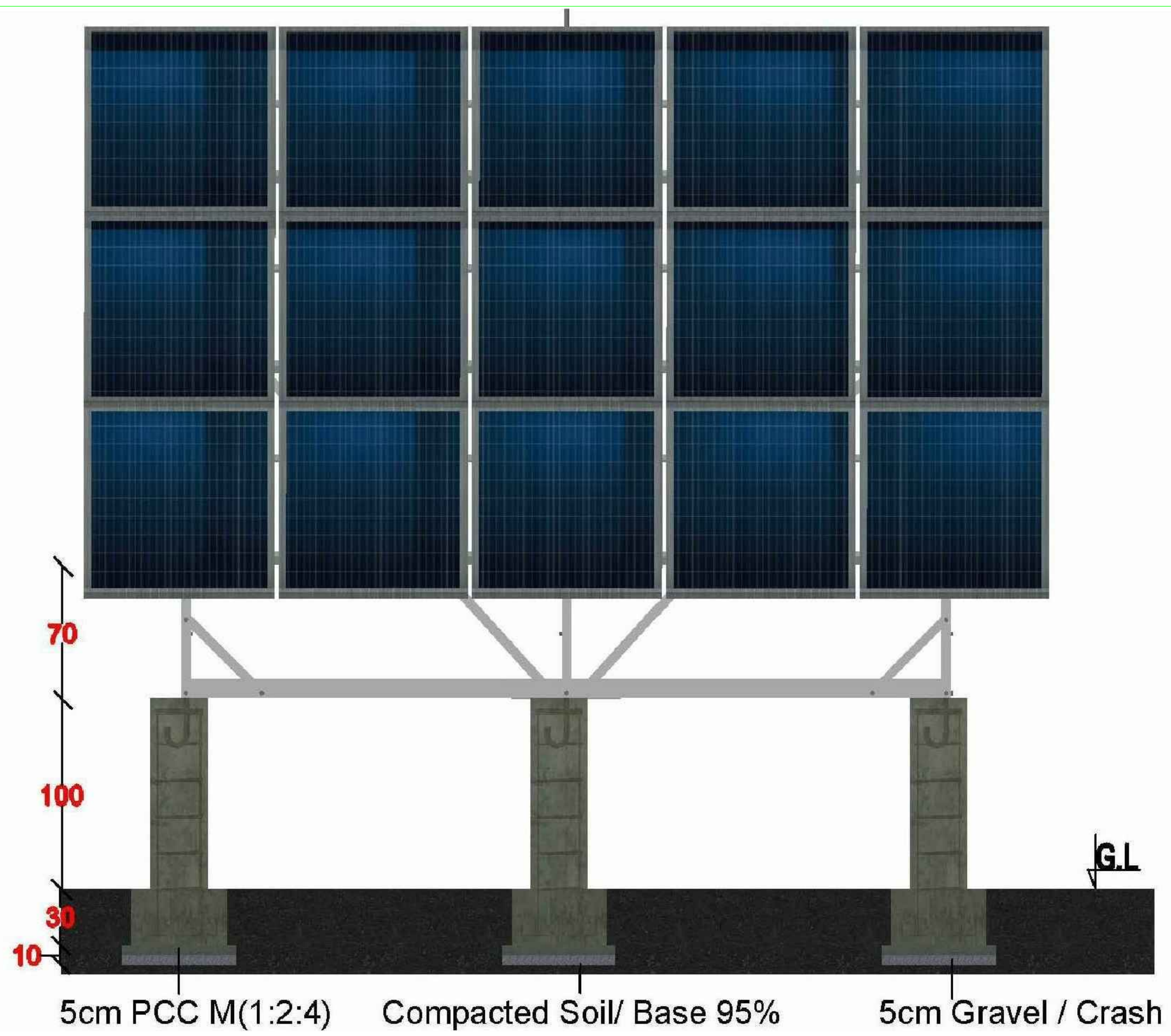
Drafted and Design BY: IMC/WASH Team
Review and Checked by: Eng. Yousuf Mazhar
Review and Approved by: Eng. Mohammad Yasir

Province: Balkh
District: Chemtal
Village: Pashmi Qala

Date: Sep/2022
Scale: A3-Shown
Unit: Centimeters

Drawing Title: Solar Frame
Sheet Title: Frame 3 D
Sheet #: -----





Funded by:	USAID/BHA
INTERNATIONAL MEDICAL CORPS (IMC) PROGRAM DEPARTMENT WASH UNIT	

Drafted and Design BY:	IMC/WASH Team
Review and Checked by:	Eng. Yousuf Mazhar
Review and Approved by:	Eng. Mohammad Yasir

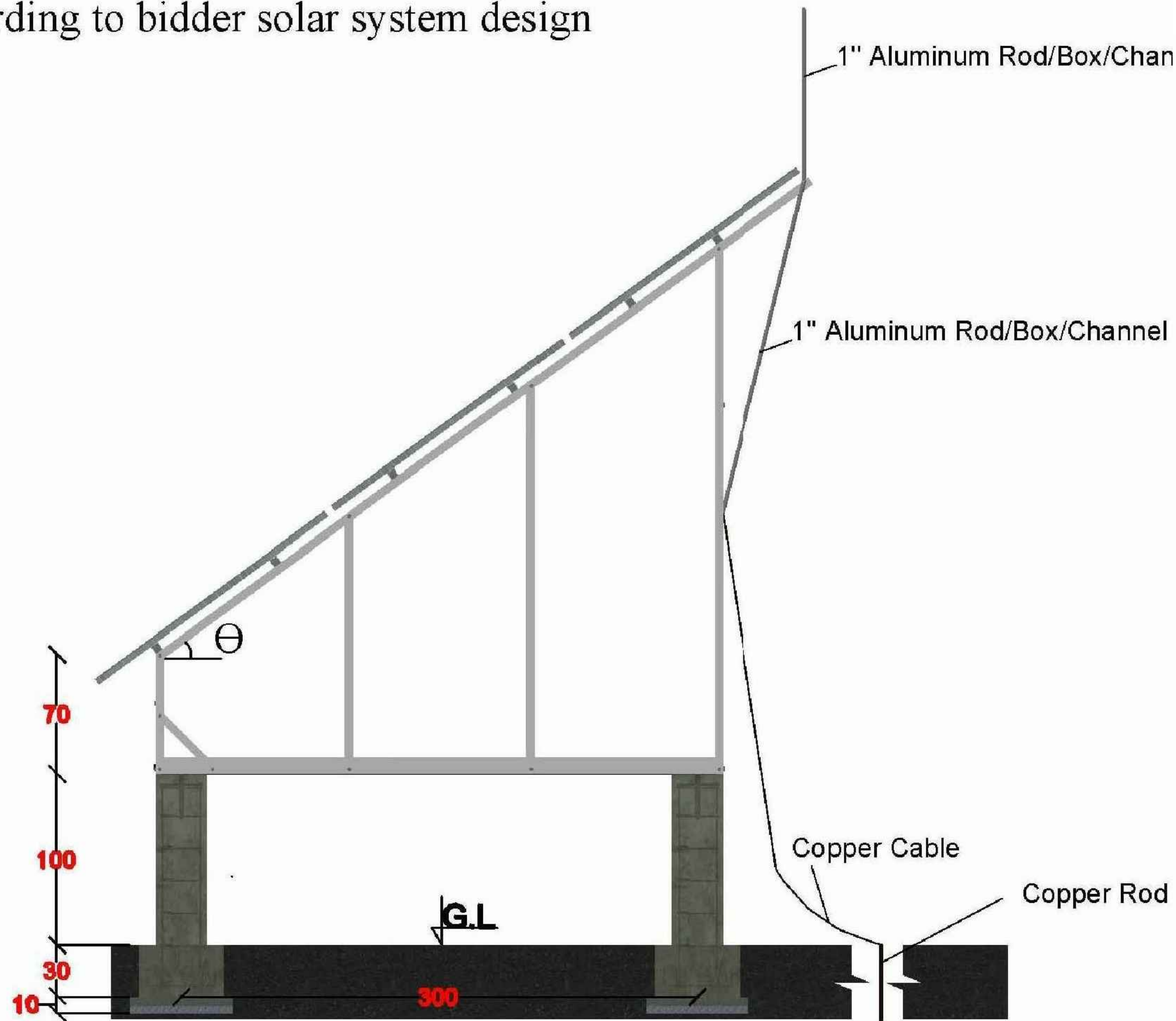
Province	Balkh
District	Chemtal
Village	Pashmi Qala

Date	Sep/2022
Scale	A3-Shown
Unit	Centimeters

Drawing Title	Solar Frame
Sheet Title	Fron View
Sheet #	-----



Angle Θ = According to bidder solar system design



Funded by:	USAID/BHA
INTERNATIONAL MEDICAL CORPS (IMC) PROGRAM DEPARTMENT WASH UNIT	

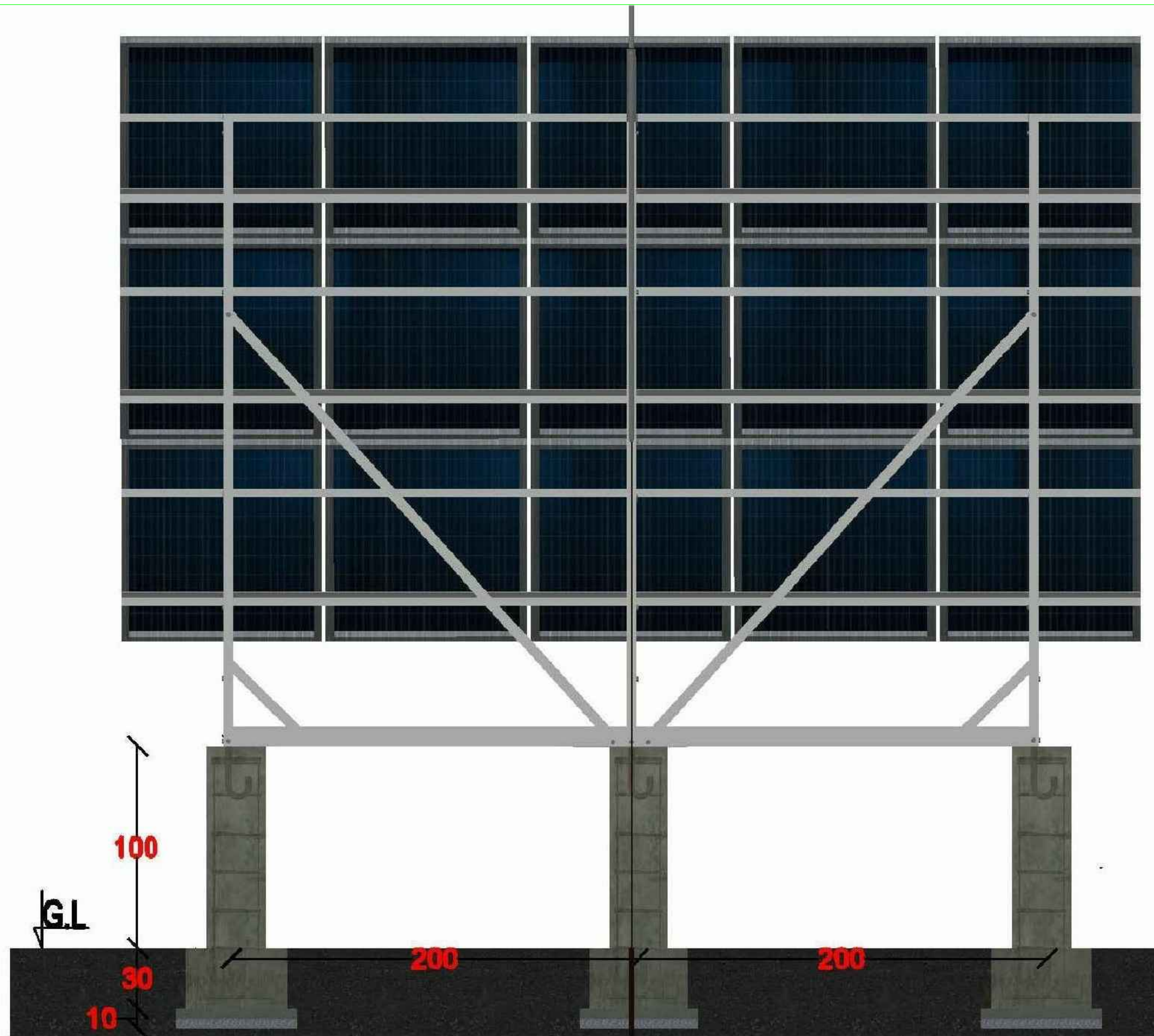
Drafted and Design BY:	IMC/WASH Team
Review and Checked by:	Eng. Yousuf Mazhar
Review and Approved by:	Eng. Mohammad Yasir

Province	Balkh
District	Chemtal
Village	Pashmi Qala

Date	Sep/2022
Scale	A3-Shown
Unit	Centimeters

Drawing Title	Solar Frame
Sheet Title	Side View
Sheet #	-----





Funded by: USAID/BHA

INTERNATIONAL MEDICAL CORPS (IMC)
PROGRAM DEPARTMENT
WASH UNIT

Drafted and Design BY: IMC/WASH Team

Review and Checked by: Eng. Yousuf Mazhar

Review and Approved by: Eng. Mohammad Yasir

Province: Balkh

District: Chemtal

Village: Pashmi Qala

Date: Sep/2022

Scale: A3-Shown

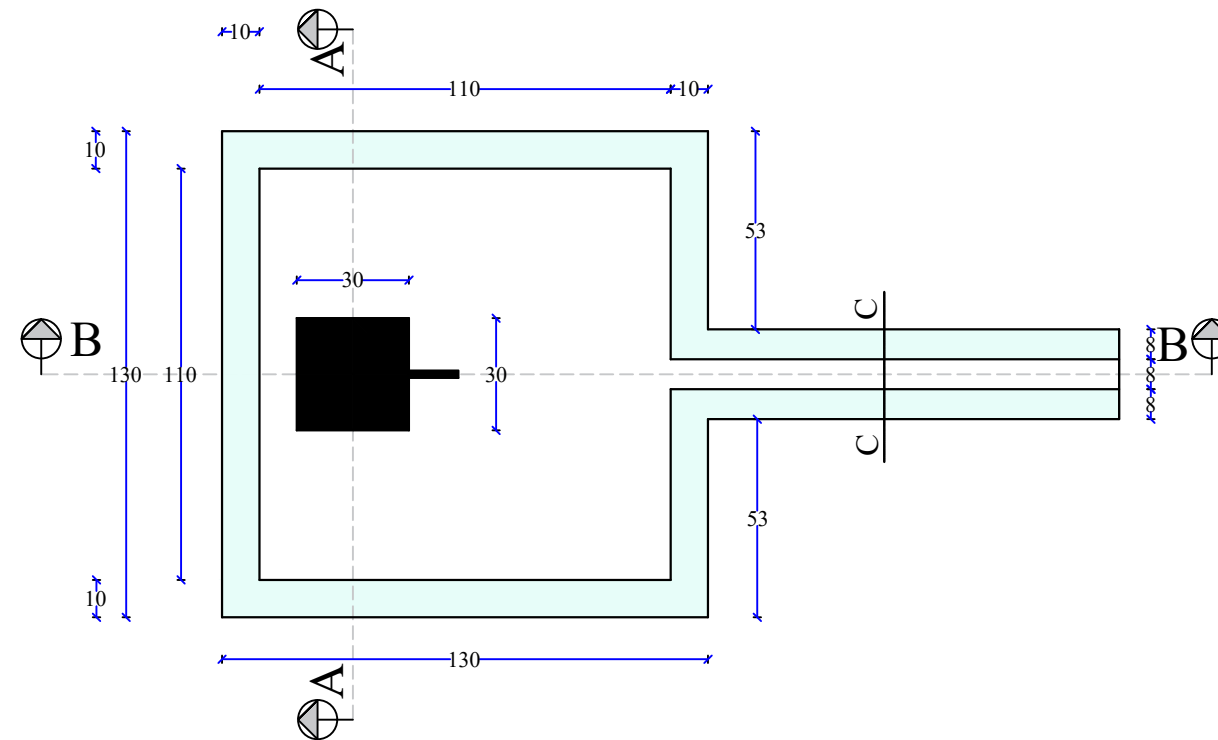
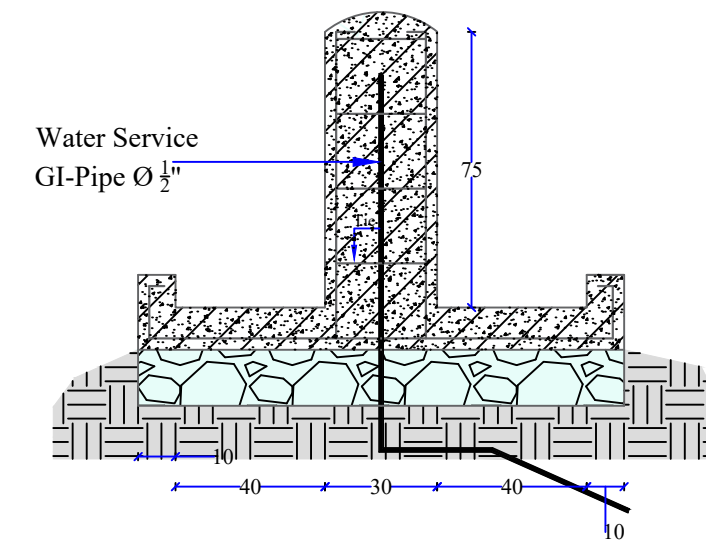
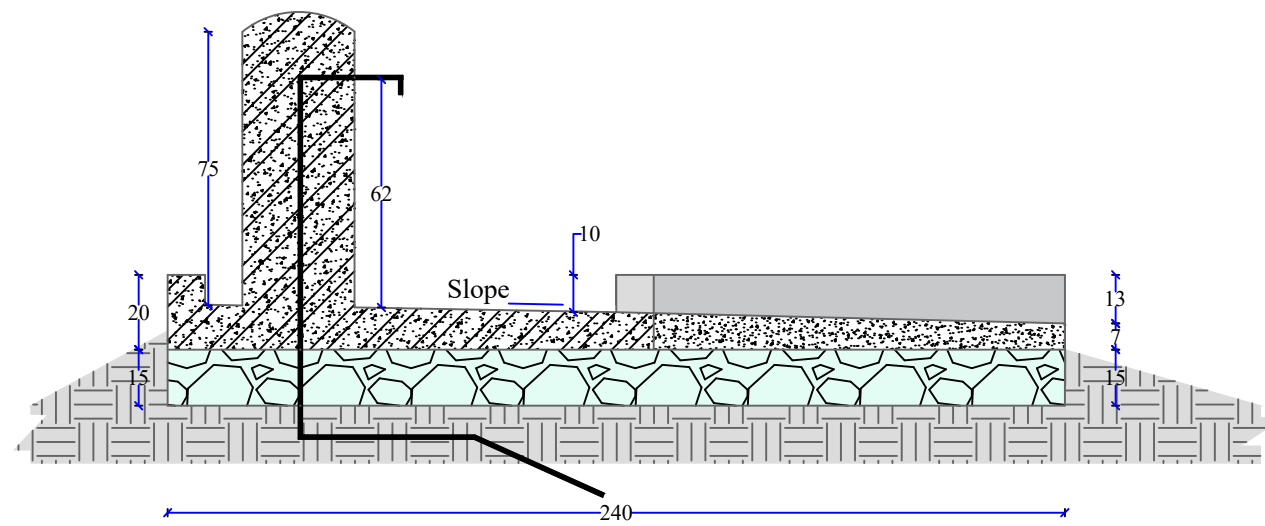
Unit: Centimeters

Drawing Title: Solar Frame

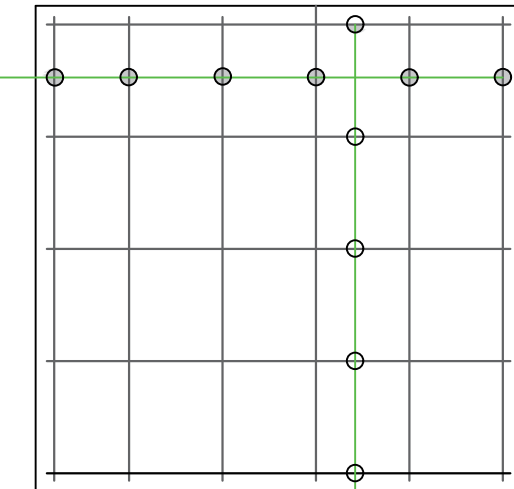
Sheet Title: Back View

Sheet #: -----

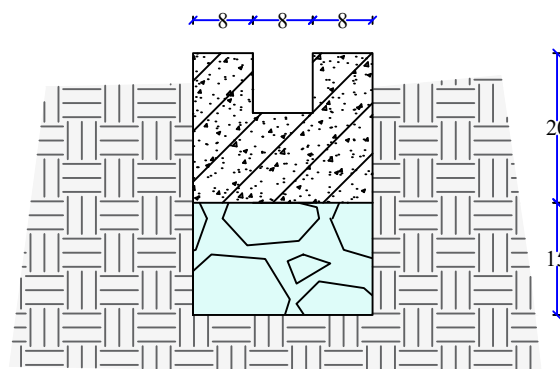




6Ø6@25c/c

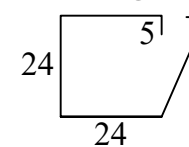


5Ø6@25c/c



Longitudinal bars
4Ø6

Ties
4Ø6 @20 c/c



Tap Column reinfor...

Funded by:	USAID / BHA
INTERNATIONAL MEDICAL CORPS (IMC) PROGRAM DEPARTMENT WASH UNIT	

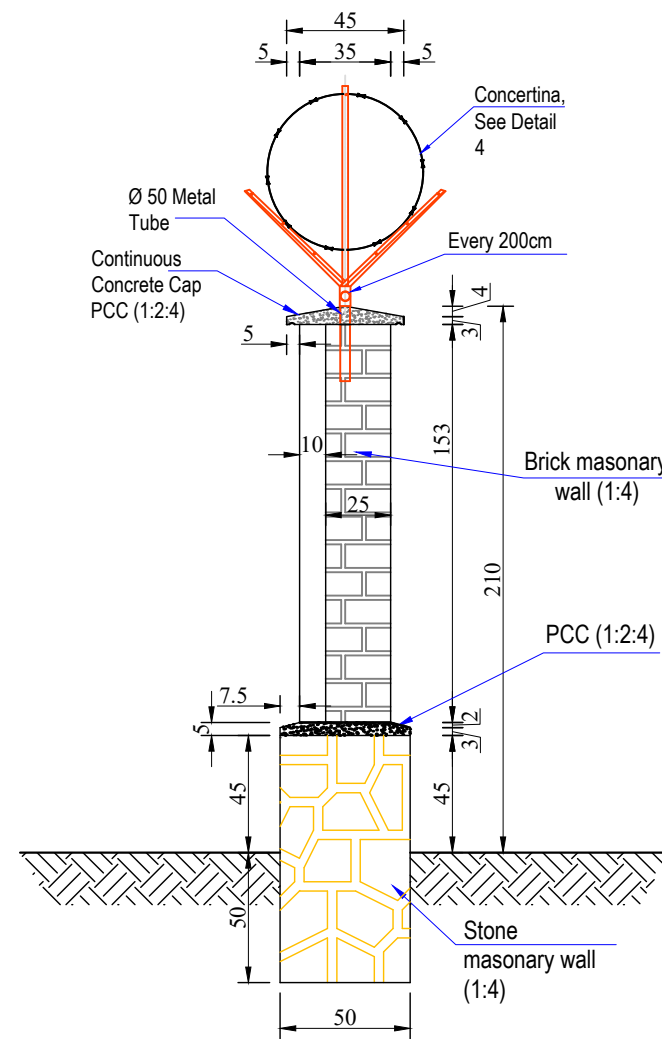
Drafted and Design BY:	IMC/WASH Team
Review and Checked by:	Eng. Yousuf Mazhar
Review and Approved by:	Eng. Mohammad Yasir

Province	Balkh
District	Chemtal
Village	Pashmi Qala

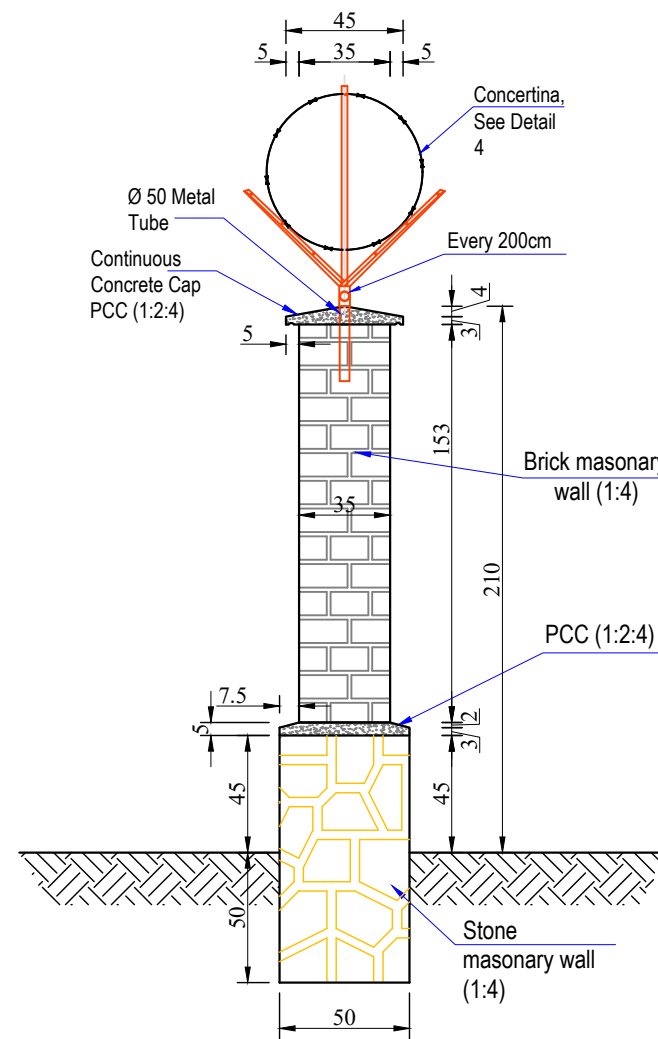
Date	Sep/2022
Scale	A3-As shown
Unit	Centimeters

Drawing Title	STP. Drawing
Sheet Title	Stand post
Sheet #	-----

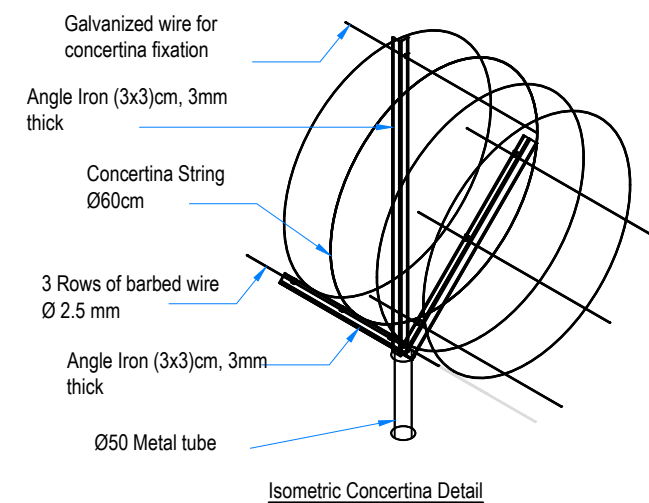
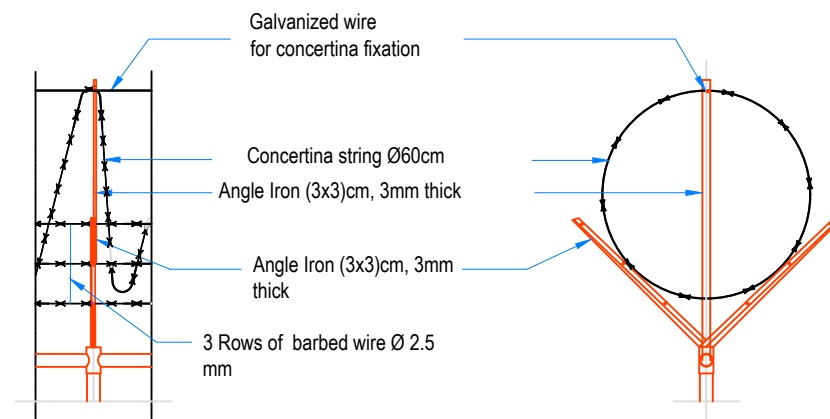
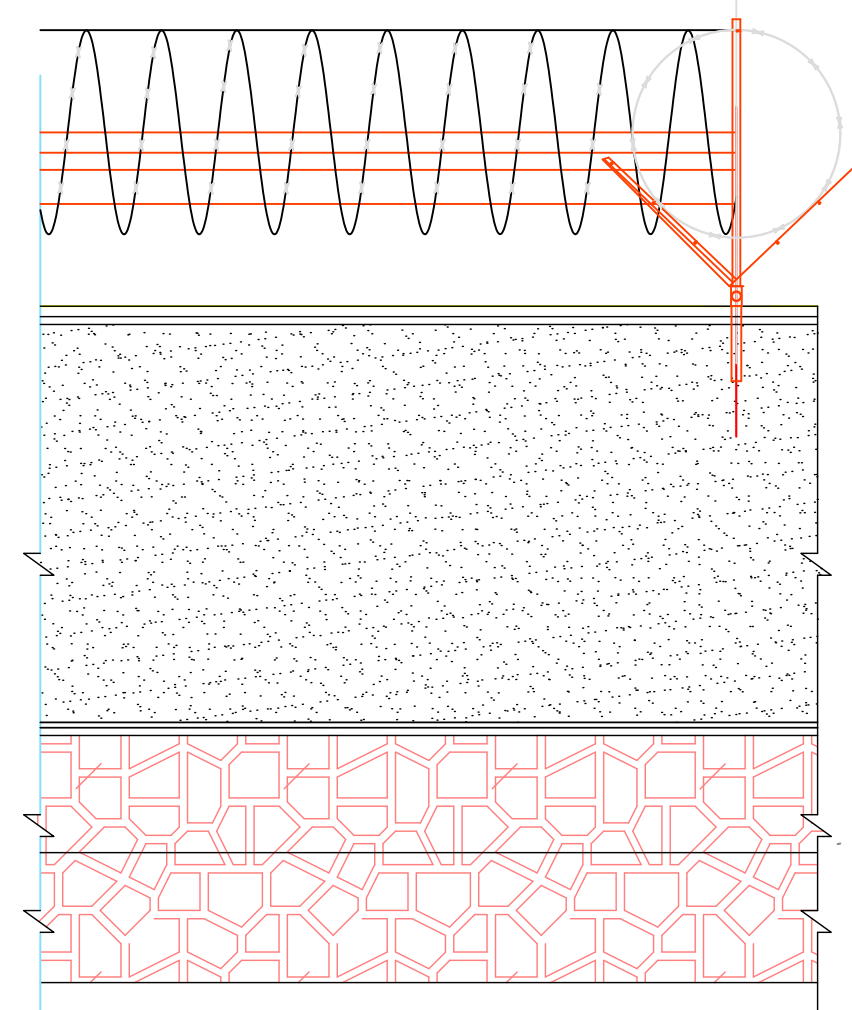




Section B-B



Section A-A



Funded by: **USAID / BHA**
INTERNATIONAL MEDICAL CORPS (IMC)
PROGRAM DEPARTMENT
WASH UNIT

Drafted and Design BY: **IMC/WASH Team**
Review and Checked by: **Eng. Yousuf Mazhar**
Review and Approved by: **Eng. Mohammad Yasir**

Province: **Balkh**
District: **Chemtal**
Village: **Pashmi Qala**

Date: **July/2022**
Scale: **A3-Shown**
Unit: **Centimeters**

Drawing Title: **Boundry Wall**
Sheet Title: **Front View+Section**
Sheet #: **-----**

