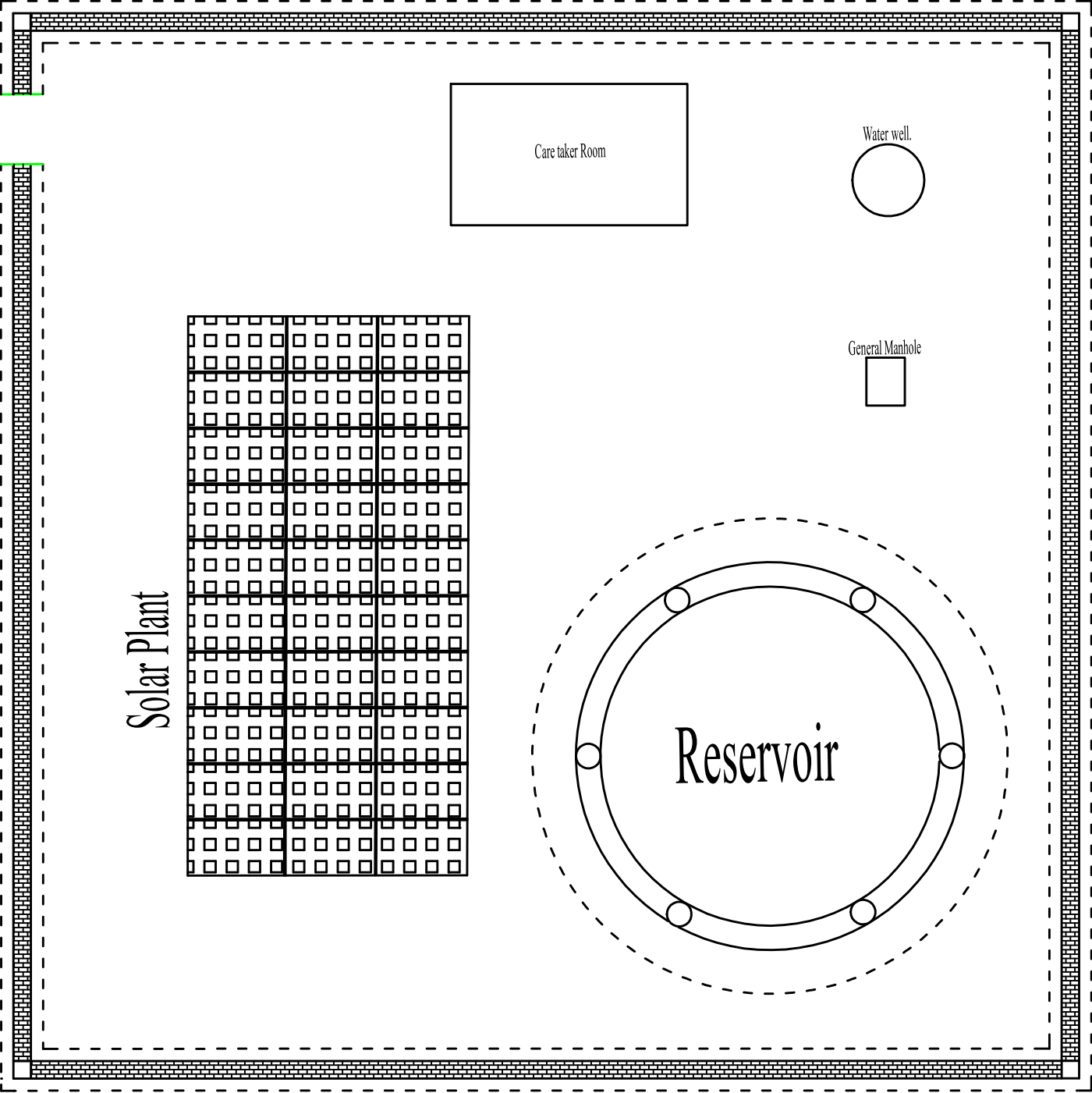
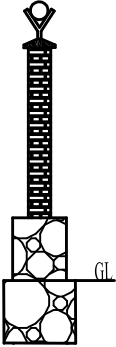


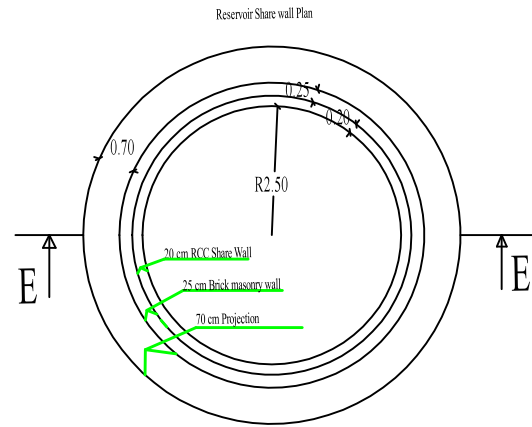
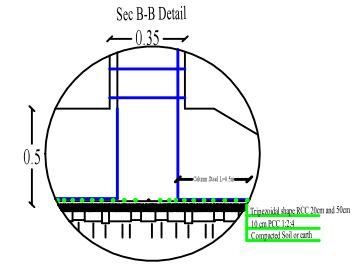
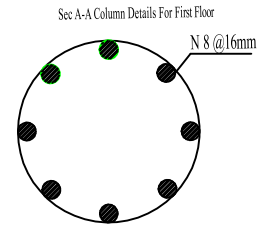
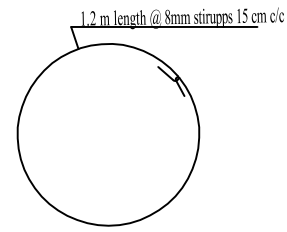
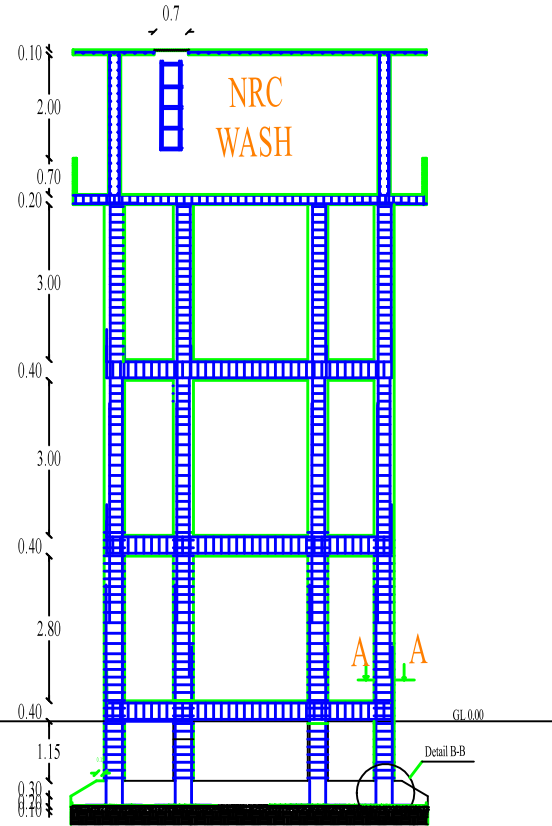
Boundary Wall and Project components Location inside.



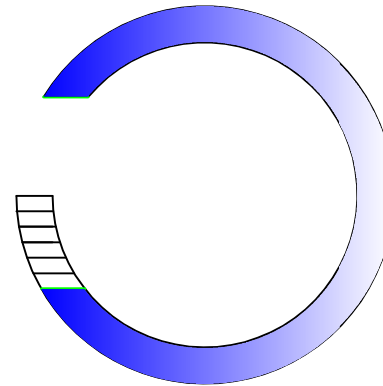
Section for Boundary wall



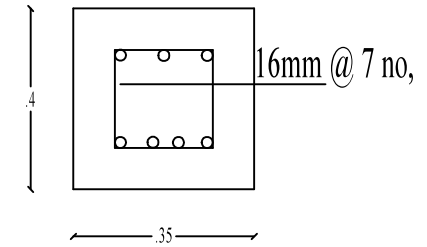
# Over Head Water Tank Cross Section E-E



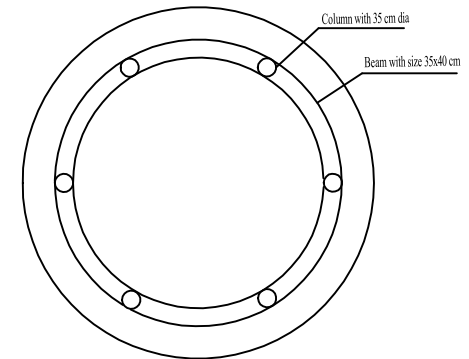
Steel Curve ladder plan



2-2, Section, Beam

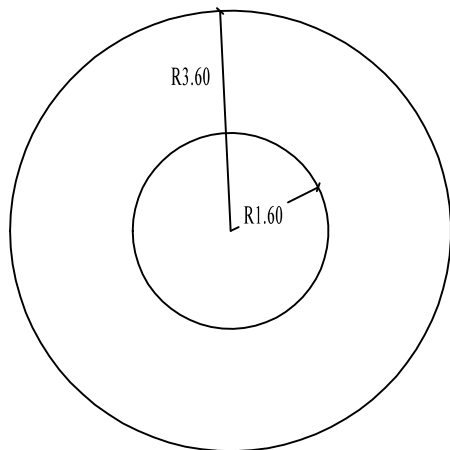


Reservoir Beam Plan

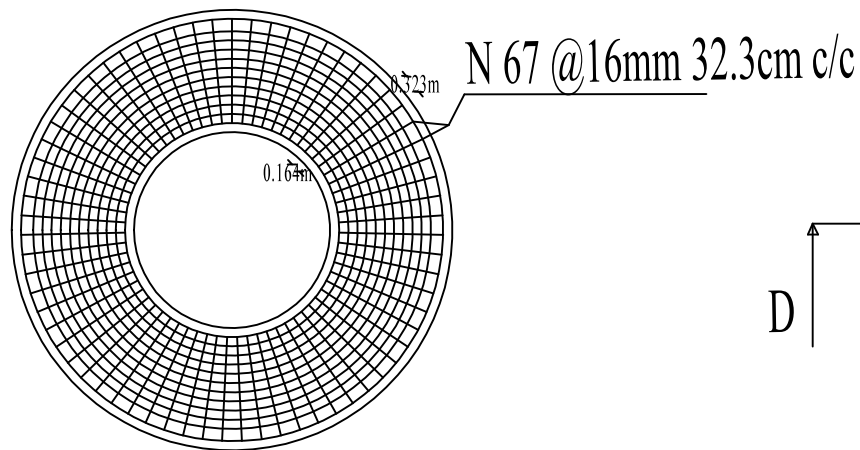


WASH-EAST	Project	Designed By	NRC East WASH Team	Department		Donor	BPRM
	Water supply Scheme- HH connection	Drawn By	Eng Farhad Aaqib	WASH		Project Code	AFFM-2101
		Checked By	Eng Basira Azimi				
				Title			
				Page			
		Water supply Scheme- HH connection		Scale	All dimentions are in meter		
				Note			

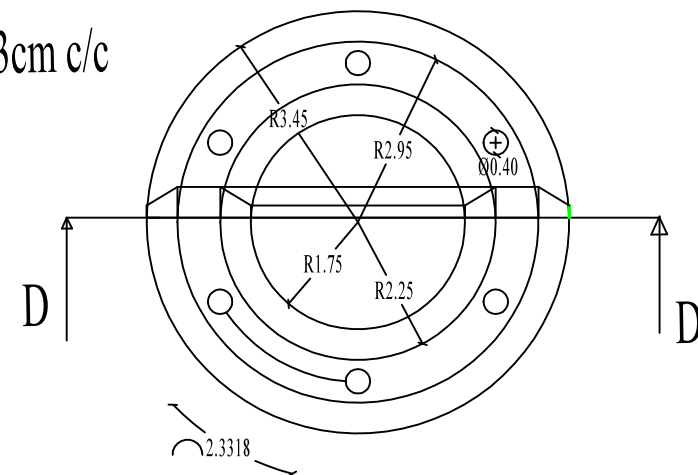
Foundation (Excavation) plan



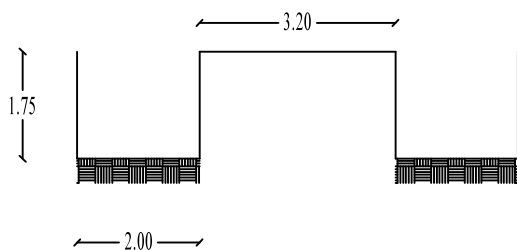
Footing Reinforcement Plan



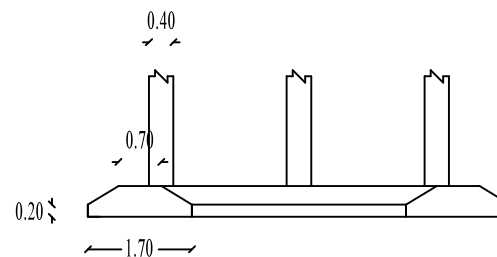
Footing Plan



Foundation (Excavation) View












D-D Section of the Footing



WASH-EAST	Project		Designed By	NRC East WASH Team	Department		Donor	
	Water supply scheme		Drawn By	Eng Farhad Aaqib	WASH		Project Code	
			Checked By	Eng Basira Azimi	Title			
					Page			
					Scale			
					Note			

# LEGEND

Proposed Well	
Main line	
Distribution Line	
Reservoir Area	
Tertiary Road	
Village houses	
Agricultural Land	
Mosque	
Hill	

Point Table				
Point #	Elevation	Latitude	Longitude	Description
2457	1456	N34.18144	E70.18528	Elevated Tank
2459	1455	N34.18129	E70.18519	Speen Ragha Well

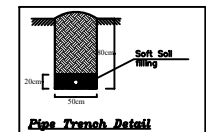
## Proposed work

- 1- Drilling of New well
- 2- Construction of Boundary wall for Solar Panels
- 3- Construction of new distribution system
- 4- Construction of RCC Elevated Water Tank
- 5- Preparing of solar pump system

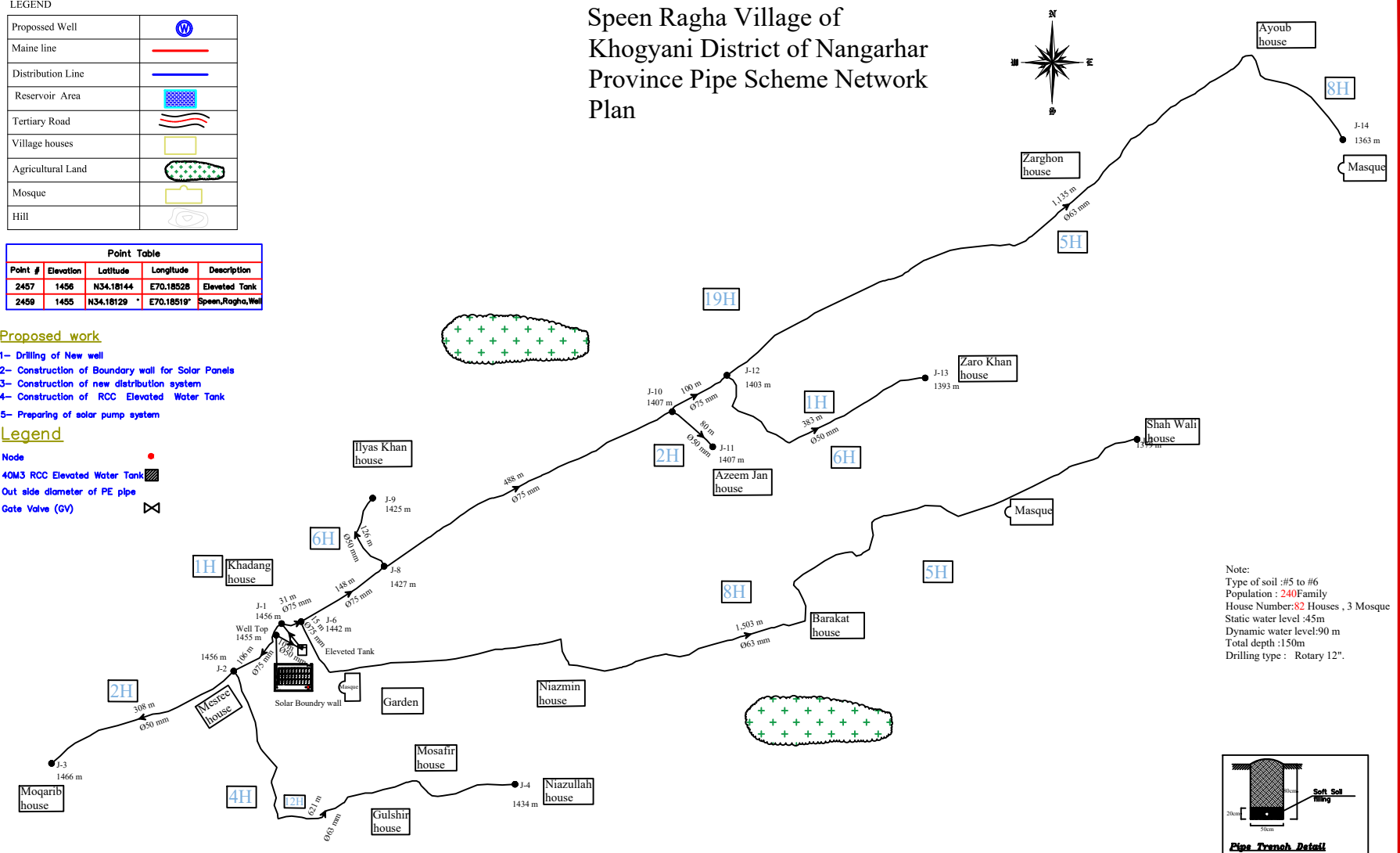
## Legend



- Node
- 40M3 RCC Elevated Water Tank
- Out side diameter of PE pipe
- Gate Valve (GV)

Note:  
 Type of soil :#5 to #6  
 Population : 240 Family  
 House Number: 82 Houses , 3 Mosque  
 Static water level :45m  
 Dynamic water level:90 m  
 Total depth :150m  
 Drilling type : Rotary 12".

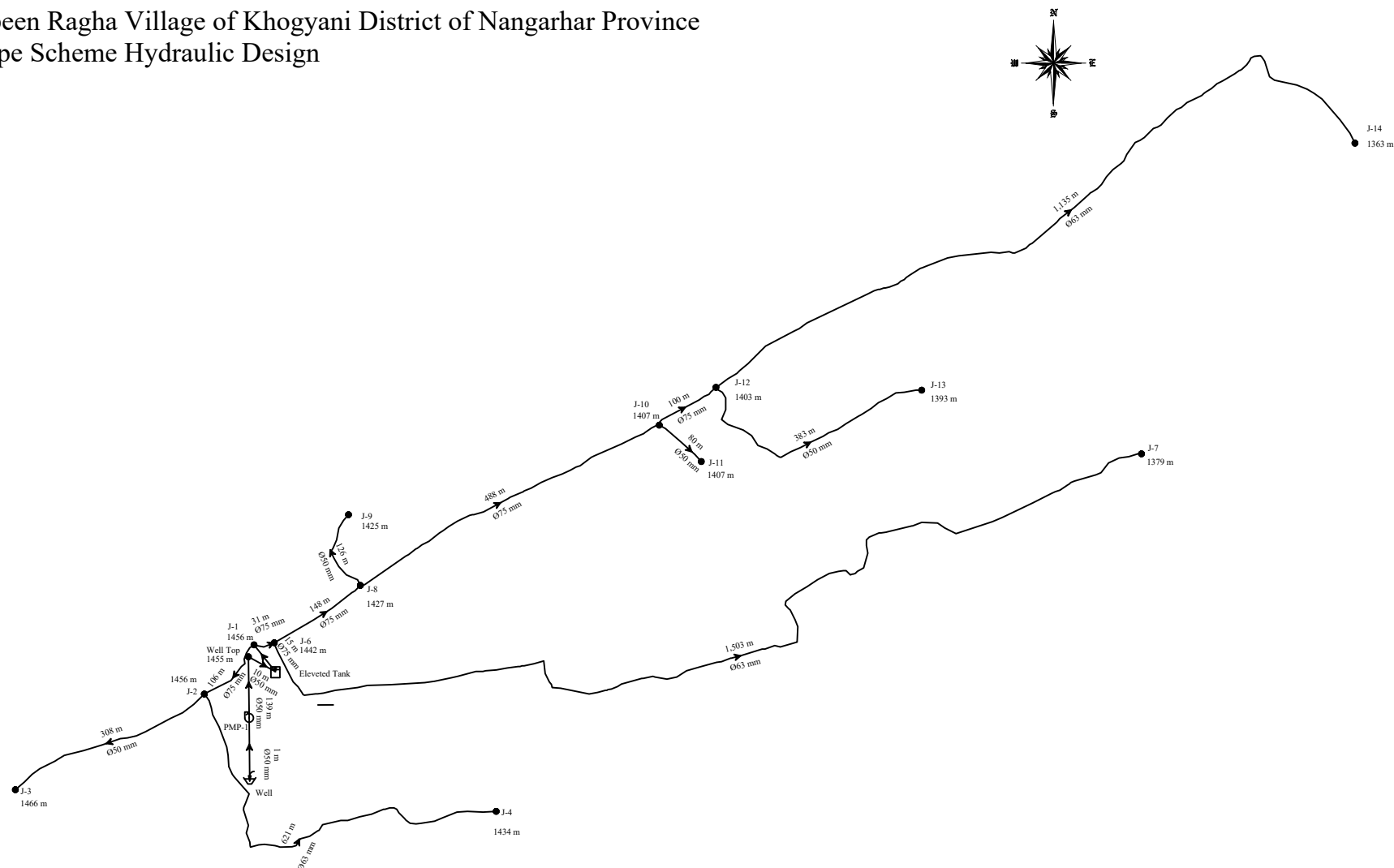


# Speen Ragha Village of Khogyani District of Nangarhar Province Pipe Scheme Network Plan


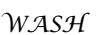
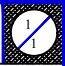


 Norwegian Refugee Council <b>WASH</b>	SURVEYED BY	Eng. Farhad "Aaqeb"	CHECKED BY		SCALE	1:4200	SHEET NO. 	PROVINCE	Nangarhar	PROJECT NAME	Water Supply Project
	DESIGNED BY	Eng. Farhad "Aaqeb"	REVIEWED BY	Eng. Mohammad Haroon Lodin	DATE	21-02-2022		DISTRICT	Khogyani	DRAWING TITLE	SITE PLAN
	DRAWN BY	Eng. Farhad "Aaqeb"	APPROVED BY		DRAWING NO.			VILLAGE	Speen Ragha		

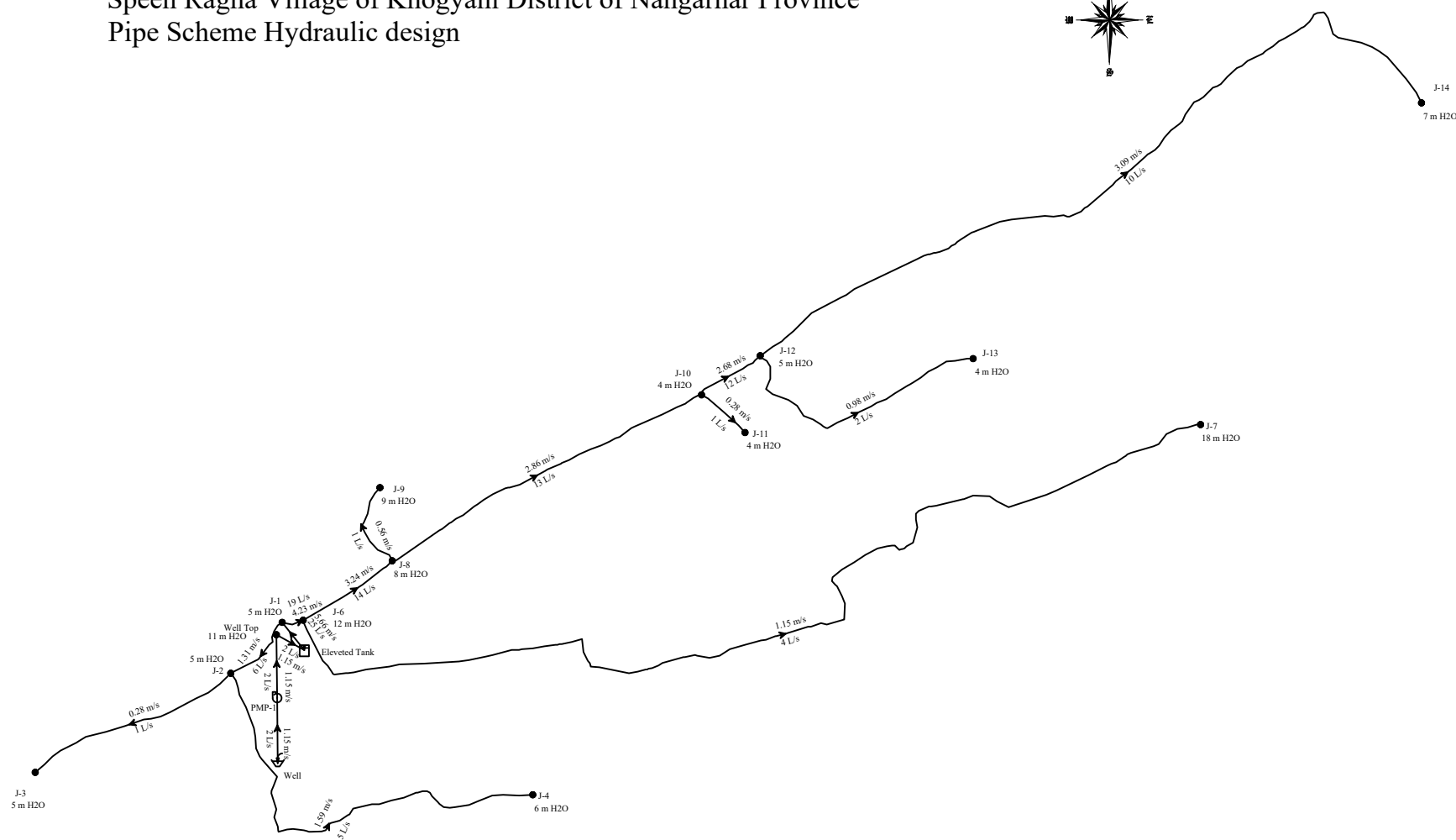
# Speen Ragha Village of Khogyani District of Nangarhar Province Pipe Scheme Hydraulic Design



Node ID: Length (m), Diameter (mm), Elevation (m)

 Norwegian Refugee Council 	SURVEYED BY	Eng. Farhad Aaqeb	CHECKED BY		SCALE	1:4200		PROVINCE	Nangarhar	PROJECT NAME	Water Supply Project
	DESIGNED BY	Eng. Farhad Aaqeb	REVIEWED BY	Eng. Mohammad Haroon Lodin	DATE	21-02-2022		DISTRICT	Khogyani	DRAWING TITLE	Hydraulic design
	DRAWN BY	Eng. Farhad Aaqeb	APPROVED BY		DRAWING NO.			VILLAGE	Speen Ragha		

# Speen Ragma Village of Khogyani District of Nangarhar Province Pipe Scheme Hydraulic design



Node ID: Velocity (m/s) ,Flow (L/s), Pressure (m H2O).

**NRG** Norwegian Refugee Council  
**WASH**

SURVEYED BY Eng. Farhad "Aaqeb"  
DESIGNED BY Eng. Farhad "Aaqeb"  
DRAWN BY Eng. Farhad "Aaqeb"

CHECKED BY  
REVIEWED BY Eng. Mohammad Haroon Lodin  
APPROVED BY

SCALE 1:4200  
DATE 21-02-2022  
DRAWING NO.

SHEET NO. 1/1

PROVINCE Nangarhar  
DISTRICT Khogyani  
VILLAGE Speen Ragma

PROJECT NAME Water Supply Project  
DRAWING TITLE SITE PLAN